



OPUNAKE & COASTAL NEWS

Vol. 27 No 5, March 30, 2018
www.opunakecoastalnews.co.nz

Published every
Friday Fortnight

Phone and Fax 761-7016
A/H 761-8206
for Advertising and Editorial
ISSN 2324-2337, ISSN 2324-2345

Inside



Easter Walk, Good Friday. See page 2



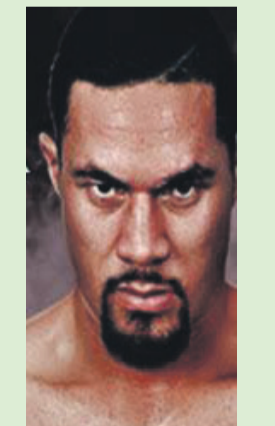
Manaia Town Hall gets reprieve. Page 5.



The passing of an Otakeho character. page 7



The first tarsealed street in New Zealand. Page 9.



International title fight April 1. Back page

Next issue of the
Opunake &
Coastal News
April 13.
Phone
(06) 761 7016

Fonterra pulls plug on stores

Farm Source in Manaia is about to close, while Eltham and Pungarehu are due to follow suit.

Fonterra Farm Source had decided back in December to merge the Manaia store with the one in Kaponga. Eltham and Stratford would merge, as would Pungarehu and New Plymouth, says Taranaki regional manager Scott Walls.

"There are big challenges all across the country about retailing with people doing more shopping online, so we've tried to build new store formats," he said. "We've been looking at the buildings and what our customers and farmers want to use the buildings for."

He points to their Inglewood store, opened in 2016 as an example of what they want to achieve.

"It's more than a store. It's become a community hub. It's just unfortunate that we can't have them everywhere."

"Eltham and Stratford are close together, so we told the staff and the public about our intent to build a new store on the south side of Stratford.

The Pungarehu and New Plymouth stores would be merged into one store, probably somewhere south of Okato, Scott said. They were also looking at where to put the Kaponga store.

"My understanding is that no jobs will be impacted and all existing staff have been offered jobs in other stores."

In Eltham a concerned Fonterra shareholders, suppliers and Eltham community group was set up after Fonterra announced they were looking at closing



The Pungarehu store destined for closure along with others.

their Eltham store.

Eltham farmer Kevin Duthie said over 100 people turned up at their first meeting.

"Closing the store will be bad for the town," he said. "I'm disappointed that on the one hand, Fonterra has not supported the shareholders by keeping its services local, and on the other letting down the general public of Eltham."

He doesn't have much truck for the new store at Stratford that Farm Source is promising.

"It will cost the shareholders more in the long run," he said.

Bridgette Leveridge from

Friends of Manaia said she had had a lot of people express concerns to her about the future of the store in her town.

"I've had people ringing up and getting quite angry in my ear, and a few people have been taking it to the council. The feedback I've been getting is that people are more than a little annoyed about the New Zealand post boxes going. People are scratching their heads about what's going on."

A NZ Post spokesperson said things are in hand.

"We did work with Farm

Source in Manaia, but we are pleased to let you know that we are in the process of moving to working with a new local business,' the spokesperson said. "The Four Square at Manaia will offer our postal services from the 29th of March."

Scott Walls said they had been expecting to keep the Manaia store open for closer to a year, but Yarrows Bakery across the road were wanting to expand and had come to them wanting to buy the site. He said they had been

working with the South Taranaki District Council and Yarrows for a number of years on the challenges Yarrows were facing with their driveway.

Scott said a lot of their transactions involved deliveries to farms, and it would just be a matter of these coming from somewhere other than they would have come from before.

"We absolutely want any service from us to be uninterrupted," he said.

Penniall Jordan

The heat is on!

Servicing Taranaki Since 1973

Don't forget about your Log Fire, see us for Wood Fires, Servicing and Parts!



Penniall Jordan

- PLUMBING • HEATING
- GASFITTING • CENTRAL HEATING
- DRAIN LAYING

191 Broadway
Stratford

Ph 06 765 5336

www.pennialljordan.co.nz



Pork Rolled Roast
\$8.99kg



Rump Roast
\$15.99kg

Royal Gala Apples \$1.49kg



4 SQUARE 45
77 TASMAN ST
OPUNAKE
06 761 8668
Open 7am to 9pm EVERYDAY!

If you love Jesus Christ and want to know more visit:
www.messagechurch.com
 We are an independent Bible Believing Church

OPUNAKE & COASTAL NEWS

Registered office: 23 Napier Street, PO Box 74, Opunake
 Phone: Office (06) 761-7016, A/h (06) 761-8206
 For advertising, email: ads@opunakecoastalnews.co.nz
 For editorial, email: editorial@opunakecoastalnews.co.nz
 For accounts, email: accounts@opunakecoastalnews.co.nz

www.opunakecoastalnews.co.nz

Editor: Bernice McKellar
 Journalists/Sales: Rolland McKellar, Bryan Kirk
 Advertising/Production: Vanessa Smith
 Production/IT: Shane Butler
 Delivery: Thursday, fortnightly
 Registered as a newspaper.

Member of the Community Newspapers Association of New Zealand

The Opunake and Coastal News is distributed free to every home and business within the rural area bounded in the north by the New Plymouth city border, extending east to Egmont Village, and around to the edge of Stratford, south to the Hawera city border and inland to Kaponga and through Eltham.

ADELPHOS

Populism in New Zealand?

Populism is a political buzz word around the world, but not always a popular one. It had its roots in ancient Rome with the *Populares* who defended the rights of the common people. Today the U.S.A. election, Brexit, Poland and France are examples of populist movements. Populist governments often get elected when some people believe that the social and economic needs of the poor and middle classes are ignored while wealthy elitists are favoured. Research on European elections since 1970 has shown that the best predictor of re-election is the life satisfaction of people, more so than economic growth, unemployment and inflation (see *Populism in Europe...* by C. Mudde et. al. 2012). A *dissatisfied* sector of the electorate then votes for change so that their lifestyle stops sliding downwards.

In the last New Zealand election both the poor and the middle class were weathering similar storms of child poverty, housing shortages, soaring house prices and unavailable/unaffordable rental properties, particularly in Auckland. Kiwis struggling on the minimum wage perceived that there wasn't enough bread on their tables let alone our expensively priced butter. National nonetheless campaigned with an array of positive economic statistics. However, their rock star stats didn't comfort a financially struggling voting sector. The result was a David vs. Goliath Labour/coalition victory ad-

ressing a climate of populist dissatisfaction. Only with the tipping point support of NZ First, Labour finally prevailed. It was an unfortunate defeat for National with far more seats in Parliament and arguably more nation-wide "popular" support.

The *Child and Poverty Monitor Technical Report* (2017) reported that in 2016 approximately 290,000 children and young people, "...were living in households with [after tax] incomes below 60% of the contemporary median income after housing costs, and over half of accommodation supplement recipients in rental accommodation were paying over 50% of their income on housing costs." These conditions helped create much of the populist dissatisfaction.

The above study, along with the *Perry Report* (2017) and Ministry of Social Development publications, described the negative effects on health and education for Kiwi families, particularly children. This climate of dissatisfaction, a desire for change and a populist type "Jacindamania effect" all added up to an upset victory for a Labour led MMP/centre-left government.

Populism may not be popular, but, it's as ancient as Rome and now part of Kiwi life: for better or for worse.

Reflection: "I am puzzled about which Bible people are reading when they suggest religion and politics don't mix" (Archbishop Desmond Tutu, South Africa).

Adelphos

Letters to the Editor

Thieving and poaching

It still seems some farmers still aren't listening, or still haven't learned to lock up their valuable farm equipment, like tools and chainsaws, and leaving keys in their farm bikes and stupidly leaving them in their cowsheds of all places, which is only inviting thieves to take these items. Yet if any burglary takes place, they all go moaning to the police and press.

Now it doesn't seem to stop there. Now our police and fishery officers are combining their efforts to try and stop seafood poachers poaching too many pauas, but some have been undersize, which to me is completely wrong, so they are now asking us, the public to keep an eye on our beaches, especially at high tides, and if seeing anything suspicious, ring the police immediately. So come on everybody, let's all start working together.

*Tom Stephens
New Plymouth*

Cyclone Gita

We all know that since Cyclone Gita struck Tonga it wiped out many homes, then our met service warned us all

*Tom Stephens
New Plymouth*

Apologies

In the Opunake and Coastal News story Maintaining family tradition brings reward (March 16), Andrew Tro-

Send your your views to:
Letters to the Editor
 23 Napier Street,
 Opunake.
 Fax: (06) 761 7016
 email: editorial@opunakecoastalnews.co.nz
You are welcome to use a pseudonym but must supply your name and address to us.

to be prepared as it was not only heading our way, but they were expecting winds up to 120kph. When it did hit us, it caused some damage around our province, and 23,000 homes were without power.

Of course many farms around our province are exposed to such high intense winds, and yes, it did leave a path of destruction.

So maybe the time has come for all farmers to form within their own surrounding areas and districts some sort of storm committee, so that everyone knows what to do, where to go, and make really sure there's no solid loose objects lying around the farms which could easily become flying hazards if ever another cyclone similar to, or even stronger than Gita comes calling ever again, as someone could be seriously injured.

love's partner was referred to as Hannah Major. The story should have read Rebecca Major.

In our 16 March issue on page 1 there was an inaccuracy in the front page article entitled RATS with a life saving message. The article stated that Tama Eminukuteputa spent his formative years in Rahotu, which is incorrect. However, although Tama was born on the Coast he lived in Rahotu for only six months, before moving to Auckland. Tama says his people are from Rahotu and still live in the area.

We apologise for these errors.

OPUNAKE CHURCHES

Good Friday Walk of Witness March 30

Starting at Cenotaph at 9am then visiting all the churches.

Finishing with a service at our Lady Star of the Sea Catholic Church at 10am.

All welcome

The Easter message

We are fortunate to have four Churches in Opunake with one message - we all profess Jesus as the Son of God and our Lord and Saviour. That is why Easter is such a special time for us.

We take turns to host the Easter Friday Service and this Easter it will be held at the Catholic Church Opunake at 10am

We start with a walk through Opunake where believers will carry the cross in memory of what He had done for us. We will start at the cenotaph at 9am and stop at all the churches starting with the Wave then St Barnabas, St Pauls until we reach the Catholic Church at 10am for the service. We invite you to come and join us. Jesus will meet your needs whatever it is - you just have to come.

Here is a short message from all our Spiritual Lead-



Peace be with you

As we approach Easter, we are navigating through the ups and downs of life, and there have been some major downs with the drought here in Opunake. May you hear the gentle but firm voice of Jesus 'Peace be with you.' Because he died and rose again, you can face tomorrow. He gives power to persevere and the hope to envisage better days.

May you be blessed this Easter

*Jennie McCullough
Mission Enabler
St Pauls Co-operating*

Christ has removed the sting of death

Christ by His dying and rising from the dead has removed the sting of death for all of us. Christ assures is that death

is only the end of birth and we all live in and with Christ in eternal life. This is the confidence and joy we enjoy and celebrate at Easter.

Happy Easter blessings to one and all.

*Father Vijay
Our Lady Star of the Sea
Catholic Church
Opunake*

The Essence of Easter

God sent his Son into the world, not to judge or condemn, but to replace the darkness of evil with the light of goodness and love. The world which God created is the only place where we can experience God's creative and saving love. This, to me, is what every person is looking for and is the essence of Easter.

*Rev'd Ian Sargent
St. Barnabas
Opunake*

The Endless Summer

I for one am enjoying this warm, dry summer, especially after our very wet summer last year. We have two great beaches and a river close by to cool off in. But as they say "all good things must come to an end." This is true for most things, including this great weather, but not all things. That's one thing I like about Easter. It's all about Jesus. He is the same yesterday, today and forever. His love, goodness and faithfulness is everlasting and ever present.

Pastor Murray McEwen

Court hears appeal against oil exploration

Five days were set aside to hear an appeal by Taranaki Energy Watch (TEW) against the proposed rules (in the District Plan) relating to oil and gas exploration and production activities to be adhered to by the South Taranaki District Council. Also involved (in support of STDC) are New Plymouth District Council, the Stratford District Council, the Petroleum Exploration and Production Association of New Zealand (PREPANZ) and Federated Farmers.

The first session began on Monday March 19 and the concluding one was scheduled for Friday 23 March. The presiding judge was Jane Borthwick, assisted by two Environment Commissioners Jim Hodges and James Baines. The appeal was originally filed in 2016 by TEW, aided by a grant of \$40,000 from the Ministry for the Environment, as well as a similar amount raised by the group's fundraising initiatives. Spokesperson for TEW Sarah Roberts has expressed her gratitude for the support her group have received, financial, expert and otherwise.



From left, Ruby Haazen, Sarah Roberts and Rob Enright. Ruby and Rob are counsel for TEW and Sarah is a spokesperson.

The opening submissions were delivered by STDC's Matt Conway and he was also representing the other local governmental bodies named earlier.

Rob Enright was the lawyer representing TEW. Submissions were also made by Richard Garner represent-

ing Federated Farmers and David Allen representing the Petroleum Exploration and Production Association of New Zealand (PEPANZ).

TEW's appeal includes opposition to seismic surveys using explosives and land farming being a permitted activity with no controls,

support for prohibited status for oil and gas activities in residential and township zones, as well as support of adequate separation distances to ensure the health and safety of people in the vicinity. The group have raised objection to such practices as fracking (hydraulic fracturing) in the proximity of residences and schools.

The first day involved much discussion on the clarification of terms and practices, with many questions raised by Judge Borthwick, Mr Hodges and Mr Baines.

On Tuesday March 20 the Judge and commissioners spent the day visiting various sites of oil and gas activities in Taranaki, including wellsites and an operating rig, production stations and landfarms.

The remainder of the hear-

ing mostly involved the testimony of expert witnesses on both side of the appeal. Ms Polich representing TEW and Ms Phillis representing PEPANZ gave evidence on risk. Mr Comben, Acting Team Leader and Principal Specialist Hazardous Substances

from WorkSafe, called as an independent witness by TEW.

On Friday the Judge stated that the Court would have to reconvene to hear the remainder of the witnesses and the closing addresses from the legal counsel. The timing of the hearing is to be confirmed.

"Let's create your business growth strategy together"
 Your only local community accounting firm

HUGHSON & ASSOCIATES
 Accounting for the future, today

Hawera - Opunake - 06 278 4169
 OPUNAKE OFFICE
 OPEN EVERY WEDNESDAY FROM 10am TO 3.30pm

EDITORIAL

Rodeos – need to be banned

The latest Urenui Rodeo has come and gone. The event is supposedly lots of fun for spectators – less so for the animals involved.

It was a shock to see a veterinary group as a sponsor of the Urenui event – aren't

vets meant to be promoting the welfare and rights of animals?

Several groups, including Farmwatch, SAFE and SPCA have argued that rodeos are unethically and inherently cruel and should be banned.

A petition organised by Mandy Carter has gathered 36,000 signatures.

Especially cruel is the calf roping where calves as young as 12 weeks in some cases are chased and terrorised then their necks wrenched to crash them suddenly to the ground. All the traumatized calves will suffer sore necks, some will have permanent ligament damage. Steer wrestling is not much better.

New Zealand should join such countries as the Netherlands and the United Kingdom and pass legislation to end this cruel event. Let's hope this will be on the legislative programme of the new Government.



Fun for some.

RENTAL VEHICLES



- CHARTER BUSES
- VANS
- TOUR BUSES

ALUMINIUM SCAFFOLDING FOR HIRE
 \$35 per day, \$50 weekend.
 More than 6 days \$30 per day.

WATERBLASTER FOR HIRE
 Petrol 3000 psi 15L/minC
Cost: Half day \$90, Full day \$120, Weekend \$130. Friday after 3pm return Monday 9am.
 Bond for waterblaster and scaffolding \$50.
 For more information contact Tracey or Christine at

PICKERING MOTORS
 11 TENNYSON ST OPUNAKE PH (06) 761-8363
 0800 22 11 20 Email: pickering.motors@xtra.co.nz



- New Houses
- Alterations
- Roofing
- All Farm Buildings
- Kitchens
- Decks

For all your building requirements, contact us today

HEARTLAND CONSTRUCTION
 48 Allison Street - Opunake - Taranaki - Phil on 027 236 7129



Precision Helicopters Limited
 Precise in nature, action & performance

www.precisionhelicopters.com Free Phone: 0800 246 359 Nationwide

For all your helicopter requirements:

- Granular and liquid fertiliser
- Boom and spot spraying
- Fine Particle Suspension
- Wild animal control
- Mustering
- Lifting
- Hunting Trips
- Scenic Flights

COUNCILLOR'S COMMENT

Decisions will affect our children and grandchildren



CLEM COXHEAD

These past few months we have been busy putting together our long term plans which are vitally important to us all as ratepayers. A lot of it appears to be boring and irrelevant, but we are making decisions that will affect our children and grandchildren.

I have just returned from a meeting to give feedback to the District Health Board. The biggest issue that popped up was the fact that the population of South Taranaki is estimated to only grow by a few people over the next twenty years. New Plymouth is expected to grow by 15%. This is a big issue for all of us especially councillors.

How do we attract more families to our area?. How do we attract industry that is clean and relevant? How do we rebuild our towns to make the future better for retailers and customers alike?

We recently had a seminar about Taranaki going forward. The main issues for us as a province are quite significant.

All of the major vehicle manufacturers in the world are committed to building only electric or hydrogen powered cars in our life time (15 years). The effect on our energy industry in Taranaki will be major. We currently have a 1 billion dollar industry that could fall away to zero over that time.

The Dairy industry in Taranaki is also a billion dollar a year industry that is quickly reaching a point where it will have to stop growing for various reason, one of them being environmental.

We are losing young people at a great rate and will struggle to stop that flow unless we do something. Remember that the aging population will end over the next twenty to thirty years.

However there is hope, that if bought to fruition will see our province continue to grow into areas of wealth creation we will have trouble believing. Did you know that 15% of the international trade around the world is now generated over the internet from small one or two person businesses that in main can run from small towns like ours?

Taranaki moving forward has come up with some very good plans to help us move forward and these include moving from oil-based industry to renewable. At present we do not have enough electrical energy to charge all of the electric cars that are expected to be sold. We have two new charging stations being installed in Opunake over the next short period of time.

What if tourism continues as it is over the next five years and we need 10 charging stations in Opunake?

How many cafes would we need to feed them while they wait? How many specialty shops would we need?. How many hire bikes would we need so that tourists can take a ride around our soon to be extended walk way system?.

How is this for an idea? We operate our coffee cart out of the Hawera race course. Here is a large area of land run by locals for over 100 years who struggle to retain the facility. They could sell some off for an Industrial park costing hundreds of thousands of dollars and losing the grandness of the facility, or we could set up a solar powered station based on hundreds of solar panels in the middle of the course that connect to a Tesla battery system in the unused car park such as they have done in Adelaide, Australia.

The racecourse would retain its size and facility and generate substantial funds for itself and the province as well as being totally clean and green.

Have we got what it takes to see these opportunities along with the value added food products and tourism as possible and essential for us to do.

I think we can and I think we should. Regards and best wishes

Clem Coxhead

SHOE & BOOT SALE by SCARPAS David Deacon. Girls and Boys School Shoes & Sandals available now. Also SHOE, BAG & LEATHER REPAIRS. 244 Broadway - STRATFORD. Ph (06) 765 5591 - Fax (06) 765 5594

HARDINGS FUNERAL SERVICES LTD. 17 REGENT ST HAWERA. Our professional attention to detail & empathy is our hallmark. PHONE 06 278 8633. SERVING OUR COMMUNITIES FOR 3 GENERATIONS

Next issue due out April 12 2017. If you use any businesses advertised in the Opunake & Coastal News tell them where you saw their ad.

MOBILITY & MORE 2010 LTD. 0800 765 763. TARANAKI WIDE SALES & SERVICE. Taranaki wide sales, hire and service. Free delivery, competitive prices. MOBILITY SCOOTERS and all living aids - we'll help you with whatever you need.

Kevin & Marilyn Bromell. 154 PRINCES ST - HAWERA. Ph: 06 278 8072 - Freephone 0800 765 763. www.mobilityandmore.co.nz

When I was young our Dad had a top draw full of fascination. We loved to get a look at the treasures our Dad (Doug) had tucked away. There were watches, badges, pocket knives, cuff links and many other bits that kept us all amused. I had a brief look at his treasure box the other day and was dismayed to see that many of those treasures are broken in some cases or just old things that really have no value.

I will still keep them just as Dad did as a memory that my brothers and sisters or their children may wish to have in the future. As I looked I found some old pennies and half pennies which got me thinking about how NZ leads the world in lots of areas such as money. Lene and I are going over to Australia soon to see family and we will go from using light high tech coins that are based on metal content to coins that are still based on weight and quite heavy. The irony is that they still use cash more than we do as well, which leads to heavy pockets of coin that seem so old and irrelevant now.

South Taranaki retail spending shows strong result for year

Latest data has revealed that retail spending in South Taranaki continued to grow

7.2% in the last six months of 2017, compared to the same period last year, well up on national growth of 5.6%

A total of \$106.12 million went through South Taranaki tills in the six months to December 31, peaking at \$21.22 million in December, followed by \$18.07m in November.

"This sends a very positive signal about the economic

health of the district," says South Taranaki Mayor Ross Dunlop.

The volume of transactions also saw a 6.4% increase, with a more modest 0.8% increase in transaction value (average \$38.64). The biggest spend continued to be in the food retailing sector (such as supermarkets), while clothing/apparel and accommodation saw the strongest growth

against last year.

President of the Opunake Business Association, Bob Clark, says it was pleasing to see increased spending across the district.

"Anecdotally I've been told that retail sales in Opunake were good, partly I think, because it's been a great summer and people have been staying longer," he says.

Bizlink Hawera (the Hawera Business Association) Chair, Gerard Langford, says the result is very encouraging and reflects the positive vibes the Association is getting from the business community.

"Importantly the trend that was set in the first six months of 2017, when retail spending grew almost 9%, has been maintained. The fact that residents spent around \$47 million outside the district also suggests there are still plenty of opportunities for businesses to establish and grow in South Taranaki," says Mr Langford.

"With a number of new businesses opening in Hawera and several key private and Council projects about to get

thinking about subdividing?

Contact Kathryn for your free consultation Ph: 06 759 5040 | Kathryn.Barrett@btw.nz | www.btw.nz

btw company. surveyors . planners . engineers . land & g-i-s services. Proud to be local - BTW since 1973. Image of a woman using a surveying instrument.

Guaranteed BEST PRICE IN TARANAKI! FREE PRINTER ADVICE. Ink + Laser Cartridges. Why pay more to print? Cartridge World. 172 Devon Street East, New Plymouth. Phone: 06 757 4380. OPEN: Mon - Fri 8:30am - 5pm Sat - 10am - 12pm. www.cartridgeworld.co.nz newplymouth@cartridgeworld.co.nz

Light ahead for Manaia's town hall

After being declared an earthquake risk, things are starting to change in the ongoing story of Manaia's town hall.

The Manaia War Memorial Hall has been closed since June 2015, meaning that other halls such as the Robert Gibson Memorial Hall had had to be used for events like the annual ANZAC Day commemoration.

Meanwhile the South Taranaki District Council has been looking at other options, including replacing, rebuilding or strengthening the hall. Combining the town's hall and library was one option they had looked at.

Last month the South Taranaki District Council's Policy Development Committee recommended up to \$1 million be made available towards rebuilding the town hall.

"Actual work won't start for a couple of years, but that gives us time to plan and consult with the community over exactly what the new facility might look like and raise some extra funds if needed," South Taranaki District mayor Ross Dunlop said at the time.



The Manaia War Memorial Hall has been closed since 2015.

At the Egmont Plains Community Board meeting held in Manaia last week, the council's group manager community services Fiona Greenhill said the money would be put into Years two and three of the Long Term Plan.

"So there's a bit of work to do about consulting the community."

South Taranaki district councillor and Manaia resident Bonita Bigham said that in talking to local residents she had noted a lot of excitement

about the potential new developments, but also a "bit of angst about losing the old hall."

Whatever happened, the Council Had decided it didn't want Manaia to lose anything in the process.

The Manaia and District RSA had previously expressed concern about what would happen to the roll of honour inside the front door commemorating servicemen of two world wars, and wars in Korea, Vietnam and the Malayan Emergency. Other concerns included an honours board in the supper room listing office holders and life members, as well as a walk-in safe holding memorabilia from various groups and organisations in Manaia.

Manaia RSA president John Graham said the Manaia war Memorial Hall had been a subject which had often come up at their regular meetings.

"We haven't heard much back yet. We're just playing it by ear," he said. "I think myself they should go ahead and either repair or rebuild it, because it's a war memorial hall, and the people of Manaia and district have put a lot of money into it."

South Taranaki retail spending shows strong result for year

Continued from page 5

underway, there is a real air of optimism about the town's future," he says.

This sentiment is shared by Mayor Dunlop.

"We're seeing a number of private business developments getting underway in the town centre, which I think endorses Council's decision to invest in our main central business district as a catalyst for growth.

RIGHT: Retail spending bodes well for South Taranaki. Bob Clark, President of the Opunake & Districts Business Association and Secretary Liz Sinclair.



Stepping Stones

Early Childhood Education Centre
We are now taking Enrolments for 2018.
Don't delay as we have limited spaces.
Please ring Gloria: 06 752 4289 or 027 463 4644
2502 Surf Highway 45, RD37, Okato
SESSION TIMES 8.30AM - 3PM

HOW TO BE RUBBISH FREE

Specialising in:

- * FRONT LOAD BINS (1.5m TO 4.5m)
- * JUMBO SKIPS (9m)
- * SUPA SKIPS (6m)
- * LOW SKIPS (4m)
- * 4 x 4 BINS (1.8m)

INGRAM'S Locally owned & operated
Hawera - Stratford - Opunake PH: 06 278 4786

Dave's available for all farm maintenance digging and all landscaping work.

S.O.S

Specialist Outdoor Services
call 027 605 8437
31 King Street - Opunake

ALUMINIUM JOINERY

• Windows
• Bi-Folds
• Sliding Doors
• Entrance Doors
• Conservatories
• Garage Doors
• Inserts/Retro Fitting

Call today for a free measure and quote

IN YOUR AREA EVERY WEEK.
Ph: (06) 758 8073
Fax (06) 758 4157
Email: andrew@rylocknp.co.nz
Web: www.rylock.co.nz

OPUNAKE LAWYERS

Thomson O'Neil & Co.

Our Opunake Office is attended by:

Robert England on Wednesday & Fridays for buying and selling houses, farms & businesses; trusts, wills and estates.

Stephanie Coulter on Tuesdays for employment matters, house purchasing and selling, refinancing and wills.

FOR ALL YOUR LEGAL REQUIREMENTS
30 TASMAN ST, OPUNAKE
PH: 761 8823

Married in Blenheim

A wedding in Pihama



ABOVE: Nathan Hickey and Helena van Velthooven married on February 24 at Blenheim. Nathan is the son of Graham and Janet (Opunake) and Helena the daughter of Luke and Deirdre (Blenheim).
Jessica Jones Photography.



On Saturday February 24, Alison Sandford (daughter of Phil and Jen Sandford, Auroa) married Shannon McMillan (son of Darren McMillan and Tracey O'Rorke, Opunake) at Peter and Jen Trolove's gardens on Patiki Road, followed by a reception at the Pihama Cricket Club.

ABOVE:
Bridal party – from left: Dylan Cooksley, Crystelle Deegan, Tony Campbell, Anna Young, Shannon & Alison McMillan, Mark Walsh, Sarah Sandford, Joel Hook & Bailey Church.

Photo: Amanda Ritchie Photography

Opunake High School students are becoming World ready

Around 70 senior students from Opunake High School students have received a Real World Ready book thanks to a grant from the Winifred Knight Trust Fund, administered by Te Karaka Foundation.

mentoring programme – we pick a couple of subjects each term and use them as a theme to focus our work ready activities around,” says Opunake Teacher Geoff Watt. “Just this term we looked at nutrition and the year 13

students made a healthy breakfast for their peers as a way of putting the theoretical learning from the book into a real life context.” Mr Watt also invites industry experts in to talk to the students about things like insurance, banking and educational and employment pathways following on from school.

“We’ve used the books before, but there was no way we’d be able to afford them this year so we really appreciate the grant from Te Karaka, the books make a real difference to the programme and is something the students can take with them into their



The happy couple, Shannon and Alison McMillan.

life beyond school.” “It is very satisfying to see Winifred Knight’s passion for education living on through the grants distributed from her trust,” says Te Karaka Foundation Chair Ken Horner. Opunake School’s mentoring programme is a 40 minute daily class for years 9-13 focused on soft skills and practical life skills complementing the traditional subjects the

students take. The books are used over a two-year period with each student. The World Ready Books are written by fellow teacher Wayne Benton from Hawera and are designed to help students learn to successfully navigate their way in to the world of work or tertiary study. Te Karaka is Taranaki’s community foundation connecting generous people with the people, projects and

charitable causes making a real difference in the Taranaki community. The Winifred Knight Trust, managed by Te Karaka since 2015, has met the educational, community, cultural and recreational needs of the South Taranaki community.
www.tkf.org.nz

Melanie Wilson
Te Karaka Foundation
021 1782 642

SUSANNE HIPPI ACCOUNTING LIMITED

Susanne Hipp

If you find yourself spending too much time on administration/ accounting and not enough on what earns you money, it is time to call **Susanne Hipp Accounting.**

Phone: 06 928 5608
Mobile: 027 610 0270
191 High Street, Hawera, 4610

www.shaccounting.co.nz

CRAWFORD AGRITECH Ltd

- TRACTOR & MACHINERY SERVICE & REPAIRS
- ON FARM SERVICING
- AIR CONDITIONING SERVICE, REPAIRS AND HOSE MAKING
- SPARE PARTS & FARM OILS
- IMPLEMENTS & ATTACHMENTS - SALES AND SERVICE
- FACTORY TRAINED TECHNICIAN
- TARANAKI & WANGANUI INDEPENDENT FERGIE TRACTOR SPECIALISTS

Ph 06 762 8023
Ian Crawford
Mob 0272 207 701

MASSEY FERGUSON | FORD | SAME | LANDINI | ISEKI | VALTRA | MATBRO INTERNATIONAL | MERLO | DAVID BROWN | RENAULT | URSUS | JOHN DEERE

MORRIS LUBRICANTS
the winning formula since 1869

Newton Gorge JOINERY 2016 LTD

ALL DOMESTIC & COMMERCIAL JOINERY

• Kitchens • Stairways • Vanities • Lounge Units • Bench Tops • And More

67 Breakwater Rd (up Norma's Way) • NEW PLYMOUTH • PHONE (06) 751 5065 • FAX (06) 751 5085 • WWW.NEWTONGORGE.CO.NZ

Coastal Welders 027 255 8677
06 752 8138

HAVE YOU BOOKED YOUR WINTER SHED MAINTENANCE YET?

Call today!
We are a local company training local people.
Email us at coastalwelders@xtra.co.nz
WAREA

Obituary James Victor Washer

1 February 1921 to 18 March 2018

James Victor (Jim) Washer was for many years a familiar sight at the annual ANZAC Day dawn service at Manaia, where the World War II veteran and well known Otakeho farmer would lay the wreath for the Manaia RSA.

Jim Washer died on March 18, aged 97, and his funeral was held at the Manaia Union Church on March 21.

He had been a driver in 31 Battery of the 7th Anti Tank Regiment during the Italian campaign and had served at Monte Cassino.

As a 96 year-old he laid the wreath at last year's Manaia ANZAC Day dawn service.

"We had to fight all the way



In Loving Memory Of
James "Jim" Victor Washer

1st February 1921 - 18th March 2018
Service Number 203279
7th Anti Tank 31 Battery WWII

up through Italy," he told the Opunake and Coastal News at that time. "It was all because of General Mark Clark from America who wanted the glory of capturing Rome, instead of cutting the Germans off."

Jim was born on February 1, 1921 and attended Manaia Primary School and Hawera High School. He left school to help out on the family farm at Inaha after the death of his brother Jack. His other two brothers Charlie and Ted later went on to become well

known farming identities in their own right at Rahotu and Inaha.

After the war, Jim married Ruth Hurrell and bought a farm at Otakeho. He and Ruth had three children, Greg, Mark and Elgene.

Mark recalls his father telling him how tough those early years farming had been.

"He said those first two or three years at Otakeho nearly sent him broke because it was so dry, so droughts are nothing new," said Mark.

As time went on things got better, and Jim was among the first farmers in New Zealand to achieve production of

400 pounds of butterfat per acre, which at that time was regarded as a very strong figure.

He was a director of the Kiwi Dairy Co-operative from 1967 to 1985 and was on the board which set up the Whareroa dairy complex outside Hawera.

He and Ruth retired to live in

Manaia, where Jim's interests included membership of the Manaia Bowling Club. Ruth's health issues led him to take an interest in the wellbeing of residents at Trinity Home and Hospital in Hawera, and mention was made at his funeral of his various acts of kindness. Ruth died in 2006.

High five for Pukekura Park with Green Flag honour

The Green Flag will be flying over New Plymouth's Pukekura Park for a fifth year this year.

The jewel in the crown of New Plymouth District Council parks was one of 18 across the country to make the grade for the international award in 2018.

The Green Flag is the international mark of a quality park or green space.

"This is a tribute to the hard work and dedication of our Parks staff and reflects the pride they take in their work," says NPDC chief operating officer Kelvin Wright.

"It also shows how lucky we are that New Plymouth's founders had the foresight to create such a fantastic and lasting asset back in 1876. We aim to keep it in good shape for future generations to enjoy."

The park includes the TSB Bowl of Brooklands and the popular Brooklands Zoo, and is host to high-profile events such as WOMAD and the annual TSB Festival of Lights, as well as concerts by international stars.

Experts assess a park for a Green Flag award using eight criteria, including horticultural standards, cleanliness, sustainability, community involvement and providing a warm welcome.

The Green Flag Award



Pukekura Park curator Chris Connolly (left) and David Leslie from Parks with the new Green Flag.

scheme, piloted in New Zealand by the New Zealand Recreation Association, was launched in the United Kingdom in 1996 and flags fly over 1,700 sites across the UK, Republic of Ireland, Germany, the Netherlands, Finland and the United Arab Emirates, as well as Australia and New Zealand.

"We know the significant contribution that public parks make to healthy lifestyles. If we want liveable cities and thriving communities, then

we need to invest in these public spaces and ensure that everyone, no matter where they live, has access to quality parks and green spaces that are fit for purpose," says Karl Nesbitt, parks and open spaces programme manager at the New Zealand Recreation Association.

"When you visit a park and see the Green Flag flying, you know you are in one of the very best green spaces."



WAREA

Now Supplying Coastal Taranaki

Supply and Deliver:

- Race Fines
- Drainage
- Roading Aggregate

Call Sam on **027 428 4706**

WWW.JONESQUARRY.CO.NZ



Specialists in on farm installations and repairs

..... make the connection

H.E.L. Electrical Services Ltd

For quality advice and service
Ph: 0800 200 210
E: info@helectricalservices.co.nz

New Plymouth - Inglewood - Okato
Ph: 06 756 7529

B & R Barron

BUILDER



2475 Surf Highway 45 OKATO
PH/FAX 06 752 4044 MOBILE 0274 448106
Email: barronz@xtra.co.nz

- Houses
- Alterations
- Decks
- Bathrooms
- Kitchens
- Roofing
- Fences
- Concrete
- Cowsheds
- Farm Buildings

Babywear and Gifts



New Seasons stock in store now

NurseryRhyme Ltd

158 High St, Hawera

Ph: 06 278 8035

Open Monday to Saturday

Taranaki nervous after mixed signals from Government

The Government will send thousands of jobs overseas, reduce exports, prolong the use of coal and make New Zealand poorer if it bans oil and gas exploration as signalled by Jacinda Ardern last week.

Jacinda Ardern has made a habit of virtue signalling, but receiving Greenpeace's petition to stop all oil and gas exploration in New Zealand on the steps of Parliament, flanked by senior ministers, is virtue signalling on a destruc-



JONATHAN YOUNG MP FOR NEW PLYMOUTH

tive scale.

We all acknowledge a tran-

sition is in play in the energy sector. Fossil fuel usage and the intensity of our energy use will continue to decline over time, but it makes no sense to abandon the oil and gas industry overnight. A ban would effectively send thousands of high-paying Kiwi jobs overseas and mean that we would just have to import more oil and gas instead.

It would also harm the environment. Another gas find in the South Island would actually help our carbon emis-

sions as hospitals, schools and industries could choose to move to cleaner gas for their boilers and dryers. New Zealand still needs natural gas as a transition fuel to ensure we have consistent electricity supply when hydro lakes are low and when the wind doesn't blow. The South Australian energy crisis is evidence enough that gas has an incredibly important part to play in the consistent supply of electricity to our communities.

But Ms Ardern's reckless move signals to New Zealand businesses and consumers that they won't be able to rely on a steady electricity supply. Last November only 73 per cent of electricity was generated by renewables – the rest was made up by thermal electricity generation, of which gas is the cleanest of fossil fuels.

The move also puts overseas investment at risk, not just in the oil and gas sector but any sector that depends

on energy. We need a stable economy that is predicated on consistency of access to electricity, and natural gas is very much part of that mix.

I would've hoped that Jacinda Ardern was receiving better advice on New Zealand's economic future than that offered by Greenpeace.

*Jonathan Young
MP for New Plymouth
National's Energy and
Resources Spokesperson*

Kids parents and whanau to help shape education

Prime Minister Jacinda Ardern is asking children, young people and their parents to share their vision for education and help shape its future, as part of a major review of the entire sector.

Jacinda Ardern launched the national Education Conversation | Kōrero Mātauranga, with an online public survey at Selwyn College in Auckland, alongside associate

ministers Tracey Martin and Kelvin Davis.

The survey is the first step in a national discussion to inform a major review of education for the next 30 years.

"A great education should bring out the best in everyone by providing the learning opportunities we need to discover and develop our unique potential, and to lead happy

and fulfilling lives," Jacinda Ardern said.

"The coalition Government has committed to reviewing how education works and ensuring the entire system – from early childhood, through to schools and tertiary and vocational education – is fit for the 21st century.

"If we're going to do this work well, we need to hear from young people who are in

the middle of their education now, and from those who care most about their future – their parents and their whānau.

"The online survey is an important first step on the road to two national Education Summits that will be held in May. The summits are opportunities for academics, teachers, young people, and their families to come together to help inform the

Government's Education Portfolio Work programme.

"We want to know what kids and their parents would do if they were in charge and how they want education to look 30 years from now."

The survey is available in English, te reo Māori and Pacific languages.

The first summit will be held in Christchurch on May 5 and 6 followed by Auckland

(May 12-13).

The Ministry of Education is working with stakeholder groups to help them identify possible participants for the summits. Education Minister Chris Hipkins will consider nominations from stakeholders and send out invitations.

Mangatoki WI visit Whangamomona

On February 7, members met up at the Mangatoki Hall where a small bus arrived to pick us up and another few members at Karen Joblin's, totalling 12, and took us out to Whangamomona. Here we enjoyed morning tea in the garden of the Hotel and we held our meeting followed by our 87th AGM. Our president led the meeting. The minutes were read and confirmed, inward mail was read.

Report from the Pioneer Village. The Treasurer's report was given, and a \$50 donation was made to Relay

for Life.

Bev Marx reported that six members would like to participate in some craft days to be arranged.

The sick visiting was done and the church at the Pioneer Village was cleaned.

Apologies: - Betty Skedgewell and Sandra Scherer. Denise Carter became a new member.

Next month's meeting will be at Pukeiti Gardens and Margaret Scott's gallery. Our mystery trip in June was discussed.

Raffles: - Denise Carter and

Liz Purks. Two more members joined us – 17 in all and a member's mother.

The AGM was lead by President Karen Joblin. The minutes of the 2017 AGM were read by Secretary Helen Whyte, and President Karen Joblin read a summary of the year's meetings.

The secretary Helen Whyte read her report and treasurer Cathy White read the treasurer's report.

Competition Points: 1st. Cathy White with 39 points, 2nd. Robyn Roberts with 35

points, 3rd. Lucy Moger with 30 points.

Election of Officers: President: Sandra Scherer. Vice President: Jenny Brown. Secretary: to be decided at the committee meeting. Treasurer: Cathy White. Competition convenor: Bev Marx. Committee: Cathy White, Olwyn Duthie, Sandra Scherer, Karen Joblin, Judy Barr, Lucy Moger, Robyn Roberts also the new secretary. Hostess Convenor: Karen Joblin. Reporter: Lucy Moger. Hall Committee: Robyn Roberts. Our link in England: Cathy

White

Our March meeting was another day trip out. Firstly we skipped our garden tour to Mr. & Mrs. Lees garden at Toko as the rain poured down! We did go to Simon Lees "Purely Wood" (wood turning) which was next door and was inside in the dry. Following this we went to the Ink Pot Café at Mitre 10 Stratford for coffee. We then drove around the mountain to Pukeiti Garden's café where we were met by Graham who welcomed us and explained

about the café and gardens. By this time, five others had joined us bringing the number to 14. Ararata W.I. were also there and had their lunch and walk around at the same time as we did. We had a shortened meeting, Helen Whyte read the minutes and the South Taranaki newsletter was handed around for us to read. Robyn Roberts is going to conference in Lower Hutt.

*Lucy Moger
Mangatoki W.I. Reporter*

JONATHAN YOUNG
MP FOR NEW PLYMOUTH

House of Representatives
National

P 06 759 1363
E newplymouthmp@parliament.govt.nz
W www.jonathan.young.co.nz
f @MPjonathanyoung

Authorised by Jonathan Young MP • Corner of Gill & Lizardet Street • NP

Peter Sole TRANSPORT

Specialising in
Low Shed and Silo deliveries
Hay / Silage / Straw for sale

Phone: 027 443 1807
Office: 06 754 8454 or 0800 1325 11

Groundspread

A BLOCKED DRAIN!!?
"Septic Tank emptying South Taranaki wide"

TARANAKI DRAINCLEANING LTD
Sid Wilson Owner/Operator
Novafloe/Culvert/Shed to Pond/Domestic
P.O. Box 149, Hawera 4610
027 7411792

Eltham's proud record short changed

Eltham has given this country a number of famous New Zealanders. These have included cricketer Martin Donnelly, broadcaster Maud Ruby Basham (aka Aunt Daisy) and classics scholar Ronald Syme. It has also given New Zealand its first tar sealed street, says Eltham man Paul Nolly. Now a recent newspaper report appears to have overlooked that achievement, handing that honour instead to New Plymouth 50km away.

A report on Sir Russell Matthews being admitted to the New Zealand Business Hall of Fame had credited Matthews with creating New Zealand's first stretch of sealed road along Currie Street in New Plymouth when he worked as assistant engineer for the then New Plymouth Borough Council.

Paul Nolly disputes this claim.

"Eltham people who have



Bridge Street in Eltham. First in New Zealand.

been here for a while have always known that Eltham was the first place to get a tar sealed road in New Zealand," he says.

Paul, who has lived in Eltham for 40 years points to a page in H.J.Andrews' book 'The History of Eltham, NZ' Cradle of the Dairy export Industry, published in 1959 to commemorate the town's 75th anniversary.

In February 28, 1906, the Eltham Borough Council accepted A.Buckland's 1009 pound tender to asphalt Bridge Street between High Street and Railway Street, and High Street between King Edward Street and London.

This was seven years before Currie Street in New Plymouth was sealed.

"That's a big discrepancy between when New Plymouth got their street tar sealed, and when Eltham got their's,

says Paul.

It turns out well known Eltham identity, businessman and politician C.A. Wilkinson had seen tar sealed roads overseas, liked what he saw and came home, wanting his town to have one of its own.

A foundation of about five inches of pre-tarred road metal was laid and compacted upon existing metal. A mat of about three inches of pre-tarred small chips and stones was superimposed, and the work was completed with a layer of dry sand.

The good people of Eltham liked the new roads so much that the tar sealing was extended to the rest of the town, and the nearby Eltham County got into the act with its first sealed road in 1909. This was still four years before Eltham's larger brother in the north of the province had done anything.

Vision to make district the most liveable in New Zealand

Making South Taranaki the most liveable district in New Zealand is the guiding vision behind the South Taranaki District Council's (STDC's) Proposed Long Term Plan 2018 – 2028 Consultation Document, which was adopted for public feedback at the March 16 special meeting.

South Taranaki District Mayor Ross Dunlop says the Council has identified a number of priorities to work towards achieving this aspirational vision, including building the new Centre for Heritage, Arts, Library, Culture and Information.

"Previously, the Council's focus has been on upgrading

our district's water infrastructure, key community facilities and implementing projects designed to make South Taranaki a desirable place to live and do business. We are now in the enviable position of having completed many of the costly upgrades that a lot of councils' are still facing," says Mayor Dunlop.

"We now have a much improved and reliable water network and, since our last Long Term Plan three years ago, we have progressed the Hawera Town Centre redevelopment, District Pathways Programme, Opunake Beach Masterplan and the new regional landfill. Our

focus for the next ten years is to complete these key projects, maintain our current assets and core services and improve our wastewater infrastructure," he says.

"At the same time the Council is conscious of the need to keep rates affordable, so we are funding many of our key projects with existing reserves and earnings from the Council's Long Term Investment Fund, rather than through rates," says Dunlop.

"With an expected average total rate increase of 3.08% per year over the next ten years, we believe our proposed Long Term Plan strikes the right balance

between progress, providing the services and facilities our communities expect and affordability, but now we want to know what our residents think," he says.

A 'Consultation Document' will be delivered to South Taranaki households from March 26. This *Consultation Document* covers the key issues and proposals in the 2018-2028 Long Term Plan, including the main projects and services the Council intends to carry out and the impact on rates over the next ten years.

Promote your events in the

OPUNAKE & COASTAL NEWS

TARANAKI BUILDING LIMITED
0278186385

SHAUN STANLEY

**181 Tasman Street
Opunake**

PH: 027 818 6385

On this month in history Landfall is first published

On March 1, 1947 the literary journal Landfall was published for the first time. The founding editor was the poet Charles Brasch. He was the editor for the next 20 years. It was printed in Christchurch

by Caxton Press where Denis Glover was in charge.

Many famous writers such as Frank Sargeson, Maurice Duggan, Ronald Hugh Morrieson, and Janet Frame had their work published in

Landfall over the years.

In 1995 Landfall was bought by the University of Otago Press and the periodical continues to be published on a quarterly basis.

POWERWORX

Power Supply Rural & Residential

Design, upgrade and repair overhead and underground power supplies

- Powerco Approved
- Underbores - wires and pipes
- Powerline maintenance
- Fault repair
- Subdivision power installation
- Vegetation control around powerlines
- Network connections
- Transformer & line upgrades
- Specialists in rural power servicing and installation

0800 877 746

Taranaki Region
Contact Bruce Wilson Manager
58 Glover Road, Hawera Ph: 06 278 4514
Email: powerworx@obertech.co.nz

**LOVE
YOUR
HEARING**

...because what happens next
is the best sound in the world

#SweetSpot

Lisa Keen Audiology
Opunake's Hearing Pro

Call 0800 555 676 today
to up your game

Wednesdays by appointment at Coastal Care
Opunake, 26 Napier Street | www.keenaudiology.nz

**lisa
keen**
audiology

Endless fun at endless summer

A sunny Opunake Sunday turned out to be the ideal time for the Wave Church to hold their Endless Summer Family Fun Day.

The Fun Day had originally been planned for the day before, but with other things happening then, it was decided to hold it a day later. Although the event wasn't advertised to start until 2pm, there were already people drifting in over half an hour before then, with the mobility scooter obstacle course attracting a good deal of interest, and inquiries being made about registering for the skateboarding and scooter riding contests as well as putting teams together for the tug of war.

Once things got underway there were the usual attractions such as face painting and the bouncy castle. Free food was on offer in the form of a barbecue or muffins.



The Aliens team in the tug of war.

At the eastern end of the domain, forwarding and backing mobility scooters around the obstacle course proved a popular challenge.

Steve Kelliher was there with his sons Donnacha and Oisin.

"I'm really impressed and I'd like to thank The Wave church for an awesome event," he said. "Hopefully they'll do it again next year. It's really and it's nice to see the town support it. The town needs more events like this."

With the scooter, skateboard and tug of war competitions complete, it was time for visiting Christchurch evangelist Darren (Daz) Chettle. "Who's had a great day here today?" he asked, getting a chorus of cheers in reply. "At one time I thought God was on the other side of Mars," he said. This all changed 22 years ago. "I walked into a church to meet some girls or get some food. I did not go in to meet

God." But things changed from that moment. "Jesus Christ is not a name in an ancient book. He is alive," Daz said. Pastor Murray McEwan said he was pleased with how things had gone. "I'm very pleased with the day, just to see the real neat turnout from such a great community" he said.



Four month old Jaide Edwards has her face painted by Bella Shegedin, while being held by her mother Taryn Pynchon.

RUNOFF/GRAZING, 23.69 HECTARES 1230 IHAIA ROAD, OPUNAKE



This Runoff/Grazing block has an undulating contour with good flat areas for cutting supplements and has its own water supply and power at the pump shed. 23.69 hectares.

\$585,000 + GST.



Matthew & Co
REAL ESTATE LTD
Licensed under the Real Estate Agents Act 2008

Gavin Howells
027 442 3538



Office
06 765 5599



Jaunte Churchill tries out the mobility scooter obstacle.

2.95% Finance



D-MAX 125



125HP Tier 3 Engine 36x12 40kph 3 stage power shift transmission Big Flat Floor Platform 95L Hydraulic Flow 480 65 R24 & 540 65 R38 Wheel Equip Comes with Loader



DT90 MULTIFARM



90HP Great multi-purpose or dry stock tractor Perkins Tier 3, 4 Cylinder Turbo Engine 12x12 Synchro Shuttle 380 R20 & 480 R30 Wheel Equip Comes with Loader

Finance based on 30% deposit 24 months GST back in month 3. Normal lending criteria applies

AGTraction 643 Devon Road, Waiwakaiho, 06 759 8432
Paul Stanton 0274403074 | Tony Coombes 0272437910



www.agtraction.co.nz

Next issue is April 13. Make sure we receive your advertisements and editorial by Monday 9 April at the latest.

POWERLINE FAULTS AND SERVICING

From a fuse or broken insulator replaced to a complete powerline rebuild
Call:

TOP OF THE LINE ELECTRICITY SERVICES

Greg Lewis: 027 453 0326
Justin Robinson: 027 445 9162

Powerline Servicing Specialists
Free line inspections
Free advice | Free quotes



Kapa Haka group thank community board



Manaia School Kapa Haka group in action.

The Egmont Plains Community Board gave funding to help the Manaia School Kapa Haka group get new uniforms. Last week when the Community Board held their meeting

in Manaia, the Kapa haka group turned up at the meeting and entertained the board meeting with a number of items. "We heard the meeting was going to be here, so we came

down to say thank you," tutor Lewis Domb said.

The funding from the Community Board had paid for part of the cost of the uniforms which the

group got at the end of last year. The rest they raised themselves, Lewis said. The group has 35-40 members ranging in age from 7-13.



DAWSON FALLS
MOUNTAIN LODGE & CAFE

WHEN WAS YOUR LAST VISIT?

Book or visit us today!

www.dawsonfalls.co.nz

Phone: 06 765 5457

Cafe open every day 10am - 4pm

Book for lunch or dinner for your group of 2-50 people in our restaurant.

Rural women still struggle

It's ironic that in the 125th year of suffrage, New Zealand women are struggling to gain and retain health services, says Rural Women New Zealand (RWNZ).

"New Zealand is still hailed as a world leader because New Zealand women won their right to vote in 1893, the first nation in the world, however, we are behind in maternity care," says board member and health convenor, Margaret Pittaway. "RWNZ has been observing the developing dilemma for midwives and those they

care for, with increasing concern.

"Rural midwives are simply not receiving a living wage due to the expectation they travel many more miles to visit patients than their urban counterparts.

"RWNZ holds grave fears for the wellbeing and safety of rural mums-to-be – decisions on maternal care are putting the mother's life and the life and intellect of new born babies at risk.

"On top of this, is the insidious progression in the closure of small community hospitals and maternity units

in the belief that centralisation of essential services is the best method.

"RWNZ firmly believes that not only is it vital to retain community hospitals for the wellbeing of our new mothers and families, but is vital for the sustainability of rural communities.

"The Government needs to empower rural communities by urgently addressing the crisis in rural health services, particularly resignations as midwives seek better and more attractive opportunities," says Mrs Pittaway.

Promote your events in the

OPUNAKE & COASTAL NEWS

FORKLIFTS

CONSTRUCTION EQUIPMENT



- RENTAL
- SERVICE
- PARTS

• NEW & USED SALES

AGENTS FOR NILFISK FLOORCARE PRODUCTS



AB EQUIPMENT

31 Hurlstone Drive, New Plymouth
Shaun McKay - Sales Specialist

Ph (06) 757 5197 or 0800 30 30 90
www.abequipment.co.nz

TARANAKI'S 4WD CENTRE - QUALITY AND SERVICE



\$29,990

13/14 HI-ACE VANS
4WD & 2WD models
Choice of 3



\$64,990

14 AUDI A6 ALLROAD 3.0 TDI
Full spec, Adjustable susp,
Bi - Turbo, 43kms, White



\$16,990

07 MITSU DELICA D5 4WD
Coach, 2.4, Versatile for family
8 Seater



\$32,990

11 MITSU PAJERO SWB
3.2, T/DSL, Auto, P/S,
68kms, Superb in silver



\$23,990

10/12 VW TIGUAN 2.0 R-Line
4WD, Auto, ABS, A/C
41kms



\$72,990

16 VW TOUAREG R-Line,
3.0 T/DSL, Every extra in
black, 11kms

H) Hareb Deken Motors

TARANAKI'S 4WD CENTRE - VISIT WWW.HAREBDEKENMOTORS.CO.NZ

331 St Aubyn St • New Plymouth Ph (06) 759 9943
FREEPHONE 0800 289 493

A/H Mike Hareb (06) 752 7697 Ton Deken (06) 752 7405
RMVT

Largest petition in five years handed to parliament

Over 100,000 people – and a live pig – ask for pigs to be protected from cruelty. 112,844 people have signed SAFE's petition to ban the use of cruel farrowing crates, believed to be the largest petition handed in to Parliament in five years.

The petition was delivered to Green MP and spokesperson for animal welfare Gareth Hughes by the animal advocacy organisation, a live pig called Buttercup and actor Thomasin

Harcourt McKenzie today. SAFE say farrowing crates, used by many in the New Zealand pig industry, breach the Animal Welfare Act because they prevent pigs from expressing their normal behaviour, which is a requirement of the Act. Mother pigs (sows) are confined in farrowing crates to give birth and nurse their babies. They are unable to turn around for weeks on end and can even struggle to lie down. Pigs are highly intelligent animals; equivalent in



Two of the protestors at Parliament Grounds.

brainpower to a three-year-old child. They are nurturing mothers but without access to bedding, their natural instincts to build a nest or properly care for their babies

are denied. To see the severe frustration in the eyes of these pigs paints a very sad picture, says Campaigns Director Mandy Carter. "Treating animals like they are nothing more than production units in cages so small they cannot even perform many basic behaviours, is simply unacceptable in 2018 and in New Zealand. The Ministry for Primary Industries likes to boast we have the highest animal welfare standards in the world. It's now time to make those ambitions a reality." Thomasin Harcourt McKenzie is currently making waves overseas in *Leave No Trace*, a film that recently had its world premiere at the Sundance Film Festival. Thomasin says, "I'm proud to support SAFE's petition to ban cruel farrowing crates. It is unacceptable to treat animals this way." Following a campaign by

SAFE, sow stalls, in which pigs were held during their pregnancies, were banned on cruelty grounds in 2010. SAFE say farrowing crates subject sows to the same mental deprivation and emotional stress. The government animal welfare committee, (NAWAC), has said farrowing crates do not meet the requirements of the Animal Welfare Act. SAFE say undercover footage has shown sows repeatedly biting at the bars; behaviour indicating the animals do not cope with confinement in farrowing crates and show clear symptoms of severe stress. Before the 2017 election, both the Labour Party and the Greens pledged to end the use of farrowing crates. "We call on the Government to stay true to their pre-election promises by banning this appalling practice," says Ms Carter.

Craig Corrigan ELECTRICAL OPUNAKE

- All Cowshed Wiring
- Farm Control Systems
- Domestic Wiring
- Electrical Inspections

No job too big or too small
Wiring the Coast - 20 years experience
Ph: Craig on 027 207 7775

Opunake and Coastal News is distributed free to every home & business within the rural area, bounded in the north by the New Plymouth city border, extending east to Egmont Village and around to the edge of Stratford, south to Hawera city border and inland to Kaponga & Eltham.

We want to be involved with your business. Call today and discuss your marketing options with us.

OPUNAKE & COASTAL NEWS

Promote your business or event in our area, call us on:
Ph/Fax: 06 761 7016 - 23 Napier Street, Opunake
or e-mail us: ads@opunakecoastalnews.co.nz

Three callouts in three days

The crew were sent to check out a vehicle that was over the bank between the Middleton Bay boat ramp and the old sewage outlet on the morning of Saturday 17th. We didn't actually know if anyone was in the car but after a good look about we realised it must have been a group of "Irish Leprechauns" creating havoc on St. Patrick's Day. As Maxwell Smart would have said, "I think it's a case of the old brick on the accelerator trick." The siren sounded just after the lunch time reminder on Monday 19th, when we were called to a hedge fire on Surf Highway 45 near Pihama. We were

extremely short crewed and very nearly didn't have enough personnel to leave the station. With the help of a water tanker we were able to halt the fire and were heading back to the station after a three hour work out. It's hard to believe but the following day we were heading to another hedge fire on the same farm. One of the first things you should do when you are thinking about lighting piles of dry boxthorn hedge cuttings is to check the weather forecast to see what the wind is up to. Secondly, make sure the contractor has pushed the piles a good distance from the hedge so the flames and wind-blown debris does end up in the hedge. We were fortunate to have the services of two front end loaders which were put to good use by making a fire break at either end of the inferno. Once this was done and things looked as if they would burn themselves out, we headed for home.....after two hours. Thanks Rusty and Mark for your help. The liquid refreshments were certainly a welcome sight and the sizeable donation that was also given will be put to good use. Thank you I don't know what it is about the area near the Nopera Road and Surf Highway 45 intersection, but we are starting to think about putting a fire station

out there. For the third day in a row we were scooting out there to attend an incident. This time, a car decided to have an excursion and get a close up look at the hedge on the corner. Unfortunately, by the time it stopped it couldn't see anything because the front window had shattered due to it rolling a couple of times before landed on its wheels facing the hedge. Luckily, our cutting gear wasn't required as the driver had escaped serious injury and was able to get out unaided. We left the four police cars to deal with the paperwork and we returned to the station.
Beau the Secretary.

Shoe Clinic
The fitting choice

OPEN 7 DAYS
9.00am - 5.00pm Monday to Friday,
9.00am - 4.00pm Saturday and
10.00am - 3.00pm Sunday

30 DAY MONEY BACK GUARANTEE
30 Day Money Back Guarantee on all footwear

consumer TRUSTED
SHOE CLINIC
Locally owned and operated

87 DEVON ST EAST, NEW PLYMOUTH
PH: 06 758 5146
WWW.SHOECLINIC.CO.NZ

NEED A SHED?
"We'll See You Right"

We have extensive experience with over 3000

- * Barns
- * Implement Sheds
- * Utility Sheds
- * Stables
- * All purpose Farm Sheds

We are fast, efficient and economical.
Free onsite visit to discuss all your requirements

STRATFORD
75 WARWICK RD, STRATFORD - 765 7800

Cindy is Opunake's quilting all black

Cindy Dobbin has been quilting for most of her adult life. Now she is set to represent New Zealand. She is one of 30 quilters selected to represent New Zealand in the International Quilt Challenge.

Also taking part will be 30 quilters from France and 30 from Japan. This is the first time this event has been held and it has been organised by Aotearoa Quilters and the equivalent national bodies in Japan and France. The theme is Natural Wonders of the World, with 30 of the world's wonders having been selected and each of the 90 quilters taking part being sent stimulus material about one of these places.

Three of these natural wonders are from New Zealand, three from Japan and three from France. The remaining 21 represent the rest of the planet.

Cindy, along with a quilter in France and one in Japan was assigned the Shiling



Cindy Dobbin with one of her previous prize winning quilts.

dressmaking. "I always used to be sewing or knitting or something."

As she got older, she became more interested in quilting. She taught night classes at the high school shortly after moving to Opunake in the late 1970s.

Now she is representing New Zealand.

"For me, it's like a pinnacle of success, like being a quilting All Black," she says.

Now the quilts are in and the collected works have already shown in Japan. In New Zealand they will be shown in Rotorua, Wellington and New Plymouth before moving on to France.

When the 90 quilts are shown at the old Air New Zealand building in Devon Street New Plymouth during Queens Birthday weekend Cindy will be able to see for herself how her Japanese and French counterparts have interpreted the Shiling Forest.



The Shiling Stone Forest as interpreted by Cindy Dobbin.

Stone Forest in China. The quilts must be 50cm by 50cm in dimension. "When people talk about quilts, they think mainly bed quilts," says Cindy. "I do make bed quilts

sometimes, but I mostly make art quilts. Art quilts don't pop out of thin air. You have to do a lot of research for them." Interpreting a stone forest has presented its own

challenges. "Stones are an important element. They're very tactile, with nooks and crannies, so I have felted to give the texture of the stones."

Her previous works have included an ANZAC themed quilt depicting the souls of the fallen making their way back to New Zealand from Gallipoli.

Her quilts have been shown around New Zealand and she has won the Taranaki Show two or three times.

Cindy says that as a child she had been interested in

Promote your events in the
OPUNAKE & COASTAL
NEWS

People who put in public notices and display adverts in the **What's On Section** for events are welcome to additionally provide extra editorial and photos **FREE OF CHARGE, to help promote the event.**

Ph/Fax: 06 761 7016
 Call in at 23 Napier Street, Opunake
 or e-mail us: ads@opunakecoastalnews.co.nz

DA BOMB
WATERSON EXPLOSIVE SERVICES
DANNY WATERSON
 STUMP BLASTING - ROCK BLASTING - TREE SPLITTING/FELLING HUNG UP TREES - ROCK FACE BLASTING - ALL ON FARM BLASTING SERVICES
 PH: 06 274 9198 - CELL 027 459 1177
 EMAIL: WATERSON@HOTMAIL.CO.NZ

IHAIA MOTORS
 for
A GRADE REPAIRS

- Tyres
- Lubes
- Panel beating
- Farm Bikes
- All mechanical repairs
- Insurance work
- Radar Detectors
- Batteries
- W.O.F
- Painting
- LPG

AT COMPETITIVE PRICES.
 Tasman St, Opunake
 Ph (06) 761-8502

BRANDERSON HOMES LTD
PRE BUILT HOMES

OFFICE LOCATED AT: 37 HAUTAPU ROAD
CAMBRIDGE
TELEPHONE 07 827 3901
 email: branderson.homes@xtra.co.nz - website: www.brandersonhomes.co.nz

Please send us an information pack about your Transportable Pre-Built Homes

Name: _____ Ph No: _____

Address: _____ Style/Size: _____

Please mail to : Branderson Homes Ltd, PO Box 434, Cambridge, 3450

Te Popo Gardens a place to forg

Te Popo Gardens just maybe Taranaki's best kept secret. The 34 acres of gardens with accommodation and a coffee shop 12 kilometres from Stratford is a little off the beaten track on the Forgotten Highway adding to the charm. Originally established to encourage bird life by renowned bird painter Janet Marshall and her husband Graham – she was commissioned by

New Zealand Post to paint native birds for a well known series of stamps in the 1970s - the beautiful property these days is owned by Amanda and Les Heynie who want to let the rest of Taranaki in on the secret. The couple who come from South Africa have been in New Zealand for 11 years. They were living in Auckland and, wanting to return to the rural life they grew up in, saw the

gardens advertised for sale. "Always my dream was to have a bed and breakfast or a coffee shop and now I've got both," says Amanda. Les is keen on landscaping and "very practical" which Amanda describes as "an advantage". An engineer, he continues to work as project manager at Ballance and comments Amanda "This is certainly a project." The gardens were established in the early



The magical forest.



The self contained rooms which each have a pot belly stove.

1970s by Janet and Graham Marshall who wanted to create an English style garden. "The majority of trees were planted with the idea of creating a bird sanctuary for Janet to paint," says

Amanda. A book of her paintings of birds and flowers was published in 1992 and some of her paintings are on display. It was all originally native bush. They also built a 70s style house and several workshops. The

workshops have since been converted into attractive modern self contained accommodation complete with pot belly stoves. The enchanting gardens where you're free to ramble include a forest and a swing bridge.

A bouquet for regional and district councils

Brian Vincent wants to congratulate the Taranaki Regional and South Taranaki District councils.

home has been Ponderosa Place with the Hihiwera Stream nearby.

higher farmlands would make its way into town, he said.

The long time Opunake resident and Egmont Plains Community Board member said they have been doing a good job on flood protection since the town was hit by the floods of August 6, 2015.

He recalls flooding being a frequent problem during that time.

"On behalf of the landowners up here who have been hit by previous floods I want to thank the Taranaki Regional Council and South Taranaki District Council for changing the water course coming into town and diverting it into the Otahi and Waiau streams.

Brian has been a member of the Opunake Volunteer Fire Brigade for the last 57 years. For the last 21 years,

He recalls "many a time" water flowing across the Ihaia Road east of town.

"I think the flooding we used to have is now past."

Drainage from the "early days" meant waters from



For competitive pricing on all your rural cartage requirements - Give us a call today!

Taranaki wide

Phone 0800 707 404

FARM POSTS & TIMBER SPECIALS DIRECT FROM OUR MILL



LIGHT QR POSTS
(EQUIVALENT TO NO.2 QR)
ONLY \$5.49 EACH

FENCE STAKES

(POINTED, IN BUNDLES OF 80)

100x50	1.5m	Only \$3.45 each
100x80	1.8m	Only \$4.19 each
75x50	1.5m	Only \$2.99 each
50x50	1.5m	Only \$1.99 each
50x50	1.8m	Only \$2.99 each

All prices plus GST

SPECIAL PRICE ONLY UNTIL 30/4/18 OR WHILE STOCKS LAST

VALUE
Building Supplies

BuildLink
Buy Better Build Better

1 KATERE RD, NEW PLYMOUTH
PHONE: 06 759 7435
JAMES ST, INGLEWOOD
PHONE: 0800 245 535

Get your worries and relax

Amanda is brimming with ideas and wants to make full use of the picturesque property and in the last 18 months has hosted various novel events. Such as murder, mystery dinners where guests get to dress in character. They recently had a Murder of the Orient Express evening. "People really enjoy them," says Amanda adding "We've run a couple of them." As well they have high teas. Also men's breakfasts for men's groups. Recently former All Black Alan Smith was guest speaker. Once a month they have a Ladies evening with music and dinner. Before the Taranaki Garden Festivals they held a barbecue and live music. "We want the locals to come," says Amanda. There are also plans to



One of the walks.

eventually create a picnic spot and camping site accessible to wheelchairs and mobility scooters. Te Popo Gardens is open in the weekends from 9am till 4pm. From Stratford take the Forgotten Highway till you

get to the old Te Popo School which nestles between some huge oak trees. The school closed in the 1960s and you can peep in the windows and still see the desks. Te Popo Gardens are opposite.



The swing bridge.

Be part of the Pukeiti story



Volunteers can get involved in a range of activities at Pukeiti including tours and events.

Volunteers are sought to fill important roles at one of Taranaki's most renowned attractions. Volunteers can get involved in a range of activities at Pukeiti, including tours and events. Pukeiti is looking for volunteers to be involved in a range of activities including events, biodiversity work, tour guiding and gardening. "Pukeiti has seen some exciting developments over the past few years and they haven't finished yet," says

Greg Rine, Regional Gardens Manager for the Taranaki Regional Council. "Visitor reaction has been overwhelmingly positive and a lot more people are coming to check it out for themselves." Greg says there are a host of options for volunteers wanting to be involved. "You don't necessarily need any particular experience - we are looking for people passionate about New Zealand history and culture, gardening, our native biodiver-

sity, or even those just keen on meeting new people." Training and support will be provided, and volunteers can expect a great team culture. If you think you might be interested, email regional.gardens@trc.govt.nz. Pukeiti has one of the world's biggest and most diverse collections of rhododendrons, set against a backdrop of lush native rainforest. Its new all-weather Rainforest Centre has a multi-media interpretation area, café, function space

and access to covered walkways. Pukeiti also has extensive walking trails and family-friendly facilities. To learn more, go to www.pukeiti.nz. Along with Tūpare and Hollard Gardens, Pukeiti is owned and managed by the Taranaki Regional Council on behalf of the people of the region.

*TE POPO GARDENS
AND ACCOMMODATION*

*13 hectares of magical
gardens and birdlife*

 636 STANLEY RD
STRATFORD 06 762 8775

FIELD SERVICE FOR TRACTORS & FARM MACHINERY

- ✓ **Tractor punctures done on site.**
- ✓ **Mechanical repairs on ATV's - Motorbikes
Motor vehicles etc**
- ✓ **Tyres available for Cars - Bike tyres - Atv & Utv tyres**

Come in and see us for all your requirements. We look forward to being of assistance.





AGRIMEC AUTO
LIMITED

38 IHAIA ROAD, OPUNAKE

PH: 06 761 8999 * CELL: 027 722 1192 * A/HRS: 06 761 8946

CONCRETE PRODUCTS

Available Now -Troughs – inspection pipes - culvert pipes - lids - bridge decks – box culverts - culvert bases - T/Walls - Manhole Lids – custom made products to order

Kuriger Engineering Ltd - 889 Kaweora Road – Opunake Call 06 761 8122 Bus - 027 235 6533 AH

Agrecovery depot established at Opunake

A brief ceremony (and barbecue) was held at Farmlands, Opunake by Isabella Shonakan, Operations Adviser of Agrecovery on Friday March 23. A huge container (approx. 8 metres by 3 metres) is now ready for use to collect empty 1-60 litre agrichemical containers (including animal health and dairy hygiene containers).

There are now more than 75 collection points throughout NZ to allow the collection and recycling of containers. This is a preferable alternative to burning, storing or burying which can have adverse environmental and safety implications.

Agrecovery is a not-for-profit Product Stewardship Programme, sanctioned by the Minister of the Environment under the Waste Minimisation Act (2008).

However, to cover costs a levy is payable by participating brands and the number of these is large (eg. DeLaval, Du Pont, Merial, Synergy, PGG Wrightson, Pfizer and many others) - and growing. "Last year we



Isabella Shonakan (Operations Adviser) of Agrecovery with Paul Sharpe, a local farmer.

collected 300 tonnes and this year we are ahead of our target," enthuses Isabella.

The containers and drums are shredded and are ultimately reborn as

underground cable covers. "Make burning and dumping a thing of the past," the website urges. Since 2017 1,838,296 containers have been collected for recycling.

Larger containers such as 61-1000 litre drums/IBCs, from participating brands, can be picked up on farm or factory at no extra cost. Agrecovery requests that

you book online if you have large drums or chemicals to be disposed of. (IBCs are Individual Bulk Containers). Elsewhere in Taranaki, there are Agrecovery

depots in Stratford (Central Spraying Services, Cloten Road), Okato (Coastal Wrapping, Stent Road) and Hawera (Farmlands, Glover Road).

There are, however, a few rules to be followed. For example, each container must be empty and triple rinsed, be made of plastic and have the brand label still in place. Other requirements are clearly stated on the container.

One of the impressed farmers at the ceremony was Paul Sharpe who commented, "It will be good to get rid of them, instead of being stored up in sheds."

Farmlands Business Manager Mike Roach had this to say: "It will be good for farmers and for the environment. It's up to the farmers to use now we've provided the facility."

You can contact Agrecovery by phoning 0800 AGRECOVERY (0800 247 326). Their website www.agrecovery.co.nz is well worth a look. Isabella can be contacted on 027 563 5885 or emailed isabella.shonakan@agrecovery.org.nz

Farm animal welfare moves up corporate agenda

Big business is getting the message: animal cruelty is bad for business, according to a Business Benchmark on Farm Animal Welfare (BBFAW) report released last month.

The Business Benchmark on Farm Animal Welfare was founded by leading animal welfare organisations,

World Animal Protection and Compassion in World Farming in 2012, with Collier Capital joining as an additional partner in 2014.

The report says more companies are responding to growing consumer and investor demand for better treatment of animals in their supply chains, and

that cruel treatment of farm animals is not just ethically unacceptable it is also bad for business.

In 2017, a record 110 companies sought a BBFAW ranking; up from 99 in 2016. The companies include global food brands such as McDonalds, Pizza Hut, Starbucks and New Zealand

multinational - Fonterra Cooperative Group Limited.

The latest 2017 report shows that many of the 110 global food companies are increasingly integrating farm animal welfare into their management and reporting processes. Forty seven per cent of these companies now have explicit board or senior

management oversight of farm animal welfare, a clear indication of how seriously they regard it, and 72% have published formal improvement objectives for farm animal welfare.

Eighty seven companies (79%) have made commitments on the crucial issue of avoiding close

confinement in one or more of the major markets in which they operate. The most common corporate commitments relate to the elimination of cages for laying hens and the elimination of sow stalls for mother pigs.

"Smart businesses know that consumers and investors will no longer tolerate cruelty to farm animals" says Ben Pearson, Senior Campaign Manager at World Animal Protection New Zealand & Australia. "Any company that has farm animals in its supply chain needs to develop a credible animal welfare policy and have it benchmarked using BBFAW."

Recent polling from the Responsible Investment Association of Australasia found that of the top three things people want to avoid investing in, animal cruelty was number one (69%). Whilst globally, the BBFAW convenes the world's first investor collaboration on farm animal welfare, which now has 19 institutional investors representing more than 1.9 million trillion pounds in assets under management.

World Animal Protection says it welcomes Fonterra's ongoing involvement in BBFAW but calls on the company to work towards improving its ranking.

Introduces our new...

CSL Chillboost

An inexpensive and novel device designed for use where milk blend temperatures are marginal or too high to meet the new cooling requirements.

CSL Chillboost is a simple solution to drop the blend temperature of milk in your vat.

CSL Chillboost quickly retrofits to your existing cooling system.

CSL Chillboost is easy to install and user programmable to fine tune your cooling.

Not the answer for everyone but will assist even if other cooling shortcomings exist. Talk to us today about this exciting new product.

Contact us **0800 10 7006**

www.corkillsystems.co.nz

NEW PRODUCT!

Stalwart recognised for service to Young Farmers



A stalwart of NZ Young Farmers has been recognised for his years of dedicated service.

Roger Dettling has been awarded a Life Membership with Central Taranaki Young Farmers.

Roger joined the organisation in 2007 and has been an active member ever since.

He convened the organising committee for the Taranaki/Manawatu Regional Final in Hawera last year.

The 30-year-old is “the brains” behind the club’s popular comedy night, which raised several thousand dollars for

charity.

“Roger’s made a massive contribution to NZ Young Farmers,” said Central Taranaki Young Farmers chairman Nick Brown.

“He’s great at organising crucial details behind the scenes that people forget about.”

“Roger’s a guy who just gets on with it and always goes above and beyond what’s expected of him,” he

said.

The father of two taught club members how to assemble and operate a chainsaw at a recent Skills Day in Toko.

The speedway enthusiast is also instrumental in organising a club dinner to welcome new farmers and rural professionals to the area each June.

Brad Markham

Our next issue is due out

APRIL 13

Phone us today to advertise on 761 7016

Central Taranaki Young Farmers chairman Nick Brown and Roger Dettling.

Food venture hones business skills

A group of enterprising Waitara students is hoping a new food venture will help them hone their business skills.

The teenagers are producing free-range eggs, assembling kitset beehives and making old-fashioned drinks as part of Enterprise Studies.

The class is a new addition to the curriculum at Waitara High School.

“I chose the subject because it combines my passion for business and the agri-food sector,” said 15-year-old student Kaedyn Wallace.

“It’s really exciting.” “We took out a small loan and bought kitset beehives off Trade Me, we’ve assembled them and relisted them at a higher price,” he said.

The students are being mentored by Megan Bates,

who’s a territory manager with NZ Young Farmers.

“I’m stoked about that,” said teacher Julie Hill.

“This is new for us and Megan’s in the rural sector, so her knowledge and connections will be invaluable.”

The students have been given the go-ahead to rear some pigs in a disused piggery on a farm next to the school.

“The plan is to raise the pigs and turn them into bacon which will give students the full paddock to plate experience,” said Julie.

“The primary industries are a great career path and there’s a real keenness from the class to make the project succeed.”

That proactive approach has led to the first TeenAg club being set up at Waitara High School.

“Four students have stepped forward to run the club and they’re getting their classmates interested and involved,” said Julie.

TeenAg clubs are run by NZ Young Farmers to highlight the vast career opportunities within the primary industries.

Two of the students, Kaedyn Wallace and Rylee Redshaw, have already been selected to attend a TeenAg leadership course.

“It’s being held in Palmerston North next month and will be an amazing opportunity to meet other like-minded teenagers,” said Kaedyn.

The three-day course will be attended by 16 students from across the lower North Island.

Brad Markham

Farm animal welfare moves up corporate agenda

Continued from page 16

Fonterra has been on Tier 4 – “making progress on implementation” – for the last three years (since its first inclusion in 2015 BBFAW Report). The Report ranks companies in tiers 1 to 6,

with tier 1 being the best and tier 6 being the worst.

“We welcome Fonterra’s involvement and their efforts on animal welfare” says Pearson, “but as one of New

Zealand’s largest companies and a major force in the global dairy industry, across four continents, we’d like to see the company make enhanced efforts to improve its ranking.”

P.G. O'RORKE CONTRACTING

Undersowing and Roller Drilling over 10 ha - \$100 per hectare

Ph 06 761 8308 or 027 451 4425

Federated Farmers pays tribute to John O' Connor

Federated Farmers offers its deepest condolences to Agriculture Minister Damien O'Connor and family after the passing of his father, West Coast dairy farmer John O'Connor.

Mr O'Connor ONZM was a passionate advocate for the dairy industry and was regarded as a pioneer for introducing dairy to the Buller district on the West Coast.

He was a Nuffield Scholar, Federated Farmers National Dairy Chair, West Coast Provincial President and served for 48 years as a director on the Buller Valley, Karamea and Westland Dairy Companies.

Federated Farmers' National President and fellow Coaster, Katie Milne says, "John deservedly achieved recognition for dedicating his life to the rural community, and was also a life member of Federated

Farmers.

"He was always genuine and encouraged those he met with an interest in farmer politics, offering advice freely from his wealth of knowledge and experience."

A keen sports follower and marathon runner, Mr O'Connor was an active member of the West Coast Rural Support Trust even in his later life.

"If you're a Coaster you'll really appreciate the challenges there is farming near the mighty Buller River. "Mr O'Connor epitomised the true West Coaster spirit through his determination and resilience to withstand the local climatic extremities.

"He also valiantly battled the scourge of TB in cattle and served on the RAHC - Tb Free as it is now called.

"The West Coast farming community has lost one of its biggest battlers - he will be sorely missed," says Katie.

West Coast dairy farmer and close friend Ian Robb, remembers Mr O'Connor's engaging sense of humour and strong moral values.

"John had a kind, wonderful personality, he could relate to most people and the trials and tribulations they faced as farmers. He would always back the underdog and would seek out those doing it tough, and this was before the days of the Rural Support Trusts.

"As his name goes, he definitely had that Irish charm. He was also a great orator and was adept at getting his point of view over in difficult conversations without offending anyone."

In his seventies, Mr O'Connor was so formidable and respected, he was still being re-elected to the Westland Dairy Companies when up against strong candidates.

"He didn't always agree for example with the merging of



Federated Farmers has paid its condolences to agriculture minister Damien O'Connor (pictured) on the passing of his father John O'Connor.

the Coast's dairy companies, but he soon got on with it, because he wanted farmers

to succeed collectively," said Mr Robb. Mr O'Connor is survived

by his wife of 62 years, Del, six children and 20 grandchildren.

Closer attention needed when using farm vehicles

Greater focus on how quad bikes and other farm vehicles are used is a necessary change to farm health and safety inspections, says Vanessa Winning, DairyNZ's general manager for Farm Performance.

"We see injuries and fatalities from quad bikes in particular far too frequently within our farming communities," says Ms

Winning. "We all need to be looking more closely at the vehicles we use on farm and consider what's the safest vehicle for the job.

"DairyNZ has already removed most quad bikes from its research farms because there are safer ways for our staff to move around the farm.

"Getting people to really think about what farm

vehicles they use, and whether the vehicles are being used safely, is a behavioural change we need to start seeing now. The sector's fatality and injury rates are just too high.

"It's good to get these conversations going, but we know that education alone won't change the way people use quad bikes. We also need to see roll over protect

bars and other safety devices becoming commonplace on farm vehicles.

"DairyNZ supports Worksafe's new initiative Safer Vehicles, Safer Farms to help farmers make the right decisions when using vehicles. We want all people on-farm to go home to their families safe and well at the end of every day."

Rustling bill does not go far enough

More needs to be done about rustling, says Rural Women New Zealand (RWNZ).

"Submissions on the Sentencing (Livestock Rustling) Bill (have) closed and RWNZ committed our voice to those calling for

more to be done to stop rustling", says National Finance Chair, Rachael Dean.

"Ian McKelvie's members bill might go some way to deterring offenders who steal all or any part of a farm

animal, but it is not enough. "A big part of the issue is that rustling is not even a crime, even though there is an offence called theft of animals, it is only theft when the animal is killed so we need to ensure an offence actually exists.

"Our research shows that many families and communities are affected beyond current and future revenue - it is affecting their confidence in the police, in the justice system and in both members and strangers in their communities.

NEED IT DONE TODAY? CALL US ...

WE DIG IT!

- Dingo Hire
- Digger Hire
- Truck Hire
- Stump Grinding
- Rotary Hoe
- Lawn Preparation
- Hole Drilling
- Chain Trencher
- Site Prep
- Calf Pens



Dingoworx TARANAKI
Dave Hancock

PHONE
027 356 7755

Do you comply with new cooling regulations?

You CAN!!

with

THE ICE TANK

- All your pre-cooling issues solved with one solution
- Pre-cooling made simple
- Fits your existing chiller unit (no extra load on your power supply)
- Maintenance Free
- One size fits all
- Utilises cheap night rate electricity
- Extremely cost effective
- Guaranteed to comply
- So simple but it works
- Locally made in Taranaki
- Installed and serviced by the manufacturer.

Call today for an obligation free quote

Sinclair
Electrical & Refrigeration Ltd

Ph 761 8084
OPUNAKE

sinclairelect@xtra.co.nz
Okato 752 4084
Stratford 06 765 4499
Hawera 274 8084



NZ FARMERS LIVESTOCK

Bulls, Boners and Store Cattle making top money

Contact
Tim Hurley - 027 445 1167
Bryan Goodin - 027 531 8511

NZ FARMERS LIVESTOCK

For all your Livestock requirements Servicing the Coast

Contact
Tim Hurley - 027 445 1167
Bryan Goodin - 027 531 8511

Rodeos under increased pressure



Should rodeos be banned in New Zealand?

As the rodeo season ends, opposition continues to ramp up to end these events, with animal advocacy organisation SAFE calling on the Government to make this season the last.

During the six-month rodeo season, which ended with the Waimarino rodeo, public concern has raised this issue with protests at rodeos, an announcement of a government review on rodeo practices and a number of media stories.

“This season has seen mounting pressure against rodeo, as cowboys continue to defend the indefensible. As public revulsion over rodeo cruelty continues to intensify, rodeo promoters are continuing to gloss over what they are forcing

animals to endure for entertainment: pain, stress and fear, as well as injury and even death, such as

the bull who was recently killed at the Martinborough bullride,” says campaigns director Mandy Carter.

“What the cowboys say publicly so often contradicts the reality of what animals are forced to endure. Rodeo

spokesperson Michael Laws said that electric prods are banned, while NZ Rodeo Cowboys Association president Lyal Cocks on the Sunday show said that he is trying to make sure that we don't use electric prods. However, footage from as recently as the Waikato Rodeo on 17 February shows electric shocks repeatedly being given to bulls confined in a chute, waiting to be forced into the rodeo area.”

“Animal welfare experts condemn rodeo. Both SAFE and the SPCA have strong policies against the use of animals in these events. People attending rodeos rarely get a clear view of the fear and stress exhibited by many of the animals in the

chutes, prior to being forced into the ring to ‘perform’ While the cowboys call rodeo a sport, if it was, the animals are more akin to a ball being kicked around the field, than to being one of the performers.” The first step in enacting Labour's pre-election promise to ban calf roping, flank straps, electronic prods, tail twisting and rope burning is in motion; Associate Agriculture Minister Meka Whaitiri's rodeo review announced in February. Green MP Gareth Hughes is also drafting a private member's Bill to ban these practises. “Rodeos are putting New Zealand's international reputation for animal welfare at risk. Good farmers aim to minimize the stress inflicted on the animals they look after. Rodeo events inherently cause distress and put animals at risk of injury, while giving the impressionable children attending, the damaging message that animals exist to be overpowered and used for entertainment.”

Open target shooting starts at Oaonui

There was a good turnout for the first open target shoot of the 2018 season and although scores were not that great there were a few standout efforts. B Grade Shooter Clare Bramley shot very well and won B Grade and only just missed out by one point of making the top six.

Craig Clealand who won A Grade was right on form to make the top six shoot off.

Hundreds were very scarce with Levin's Scorch Taylor scoring three and Taranaki's Bruce Cameron scoring

four. The final six top scores were B. Cameron 499.33, S. Taylor 498.37, J. Cameron 486.28, R. Herbison 491.33, C. Clealand 488.21.

Taranaki selectors will be looking at who is on form over the next few competitions to select a team for the Teams of Ten to be held in Tauranga on the May 12, so competition will hot up from now on.

Scores were: Master Grade: B. Cameron 299.17, S. Taylor 298.21, J. Cameron

296.19, R. Herbison 293.19, D. Fake 292.17, B. Moratti 291.14, G. Rowlands 289.15, P. Tidswell 287.10, D. Gibson 286.9,

A Grade : C. Clealand 293.13, F. Eustace 289.14, J. Kinsey 288.14, T. Jupp 288.11, H. Andreoli 287.11

B. Grade: C. Bramley 291.11, G. Moratti 289.14, M. Smith 287.10, M. Kinsey 285.11, P. Longstaff 283.8, I. Hayton 282.4

C. Grade: B. Bramley

285.10, L. Taylor 285.7, A. Fake 278.9, S. Brown 277.5, L. Donnelley 276.9, B. Moratti 275.5

Frank Eustace



It's Lacking in our Soil

Symptoms of magnesium deficiency are muscle cramps or twitches, problems with sleeping, tiredness, muscle pain, headaches, bowel problems, difficulties with the heart, body tension, nervousness and irritability to name a few. Magnesium oxide causes loose bowel motions, if you aren't suffering from constipation take one with out. Magnesium ultra is bonded onto a protein molecule so it doesn't cause loose bowel motions.



THE HEALTH SHOP

We keep you healthy™

Centre City Shopping Centre Ph: 06 758 7553



Hi from the Professionals Rural Team,

Paddy and Ross have both had years of farming experience. They understand your wants and needs, plus have a combined 50 years of selling rural Real Estate. Paddy just celebrated 40 years of selling rural properties all over the country and has been involved in over 2000 sales.

We need listings of all types of rural properties:

Dairy farms, sheep and cattle units, grazing/ run off blocks plus lifestyle properties or if you are considering subdividing some land off your larger property, we are the experts to guide you through the process.

Remember all consultations and appraisals are FREE.

Experience counts – Give us a call today!



Paddy Bolger
licensed real estate agent
M 027 434 4464

Ross Davis
licensed real estate salesperson
M 027 680 5933



Supporting the Child Cancer Foundation for over 20 years.

Beaven Realty Ltd
Licensed under REAA 2008
106-116 Leach St, New Plymouth

nakirealestate.co.nz

Surf Life Saving patrol flags come down on another summer

Surf Life Saving New Zealand is celebrating another successful summer of saving lives as the season officially comes to a close this long weekend.

Easter traditionally marks the end of the Surf Life Saving patrol season which began at Labour Weekend and saw 74 clubs patrolling 92 locations nationwide.

Surf Life Saving New Zealand's Lifesaving and Education Manager Allan Mundy says it

has been a hugely busy summer in comparison to last season which saw lifeguards operating in some challenging conditions.

"This summer, we experienced some amazing weather and warm water temperatures which brought huge crowds to our beaches around the country and to particular 'hot spots' like the Bay of Plenty and also Christchurch and Dunedin during their respective heat waves, he says.



Celebrating a successful summer of saving lives.

"Great weather naturally increases the number of people flocking to beaches and therefore we're likely to see rescue numbers go up but one of the key factors to look at is the number of assists that have been carried out by lifeguards to prevent people from getting into a life threatening situation."

Surf Life Saving New Zealand records both 'rescues' which involves saving someone from a life-threatening situation, as well as 'assists' which involve removing swimmers from dangerous situations.

Provisional statistics for the 2017/18 season show a 26% increase on the number of rescues compared to last season and most encouragingly, an 84% increase on the number of assists. Lifeguards have carried out 769 rescues (compared to 612 last

season) along with 2,176 assists (1,184 last season).

The Gisborne, Bay of Plenty and Coromandel coastline saw a consistent East Coast swell throughout most of the season with the odd cyclone-related swell which made for some challenging conditions for lifeguards including rips and holes constantly changing.

In stark contrast to last season, they had very high numbers of people using the water more frequently and, of those, a significant amount outside of patrol hours or outside of patrolled beaches.

A number of out-of-hours rescues and callouts also made for an early start to the patrol season for lifeguards in the South Island. The number of rescues were higher than previous years which was a reflection on the greater number of

people being at the region's beaches. Mr Mundy says lifeguards really stepped up to the challenges of a record summer that saw unusually high numbers of swimmers on our beaches each day coupled with larger than normal surf.

"They can all be proud of the fact that they have contributed to saving hundreds of lives," he says.

After what was a very positive start to the summer, the country saw six beach drownings in February and March, taking the number of drownings at unpatrolled beaches between Labour Weekend and mid-March to 11. While better compared to 17 at the same time last year, it is a rapid slide from just two at the end of December and five at the end of January.

Mr Mundy says one drowning is too many but

one fact remains the same—swimming between the flags is always the safest place to swim.

"Considering the fantastic summer we've had, and the number of rescues and assists that have been carried out, it is pleasing to see that the number of drownings at unpatrolled beaches hasn't increased dramatically on last year."

Mr Mundy says with Easter falling slightly earlier this year and the weather still being quite settled, there is a risk of the recent spate of drownings continuing, therefore people really need to stop and think carefully before they enter the water at an unpatrolled beach.

"We are asking people to take responsibility for their own safety and those around them. Learn to spot rips, assess the conditions and always swim with a friend. The surf is an unpredictable environment that can change very quickly. If you're not confident in your ability and don't know how to safely get yourself out of danger, then quite simply you should stay out," he says.

While the red and yellow flags will be put away until Labour Weekend, volunteer lifeguards will continue to be part of callout and search and rescue squads over the winter months as well as continuing with their training, upskilling and keeping their surf clubs running.

Mr Mundy says a massive thank you must go out to the 19,000 members and 5,000 lifeguards around the country that have worked tirelessly to keep beachgoers safe for another year. "Being a Surf Lifeguard is a big commitment and we're incredibly grateful to all of our volunteers."

Finalised patrol statistics for the 2017/18 season will be available in due course.

Right into Outdoor Power Equipment



STIHL
Mini Boss Chainsaw
\$395



Line trimmer
\$195



Vac Shedder & Blower
\$395

COLLINS SPORTS CENTRE
Tasman St, Opunake Ph: 761 8778



OPUNAKE & COASTAL NEWS

LIKE ONE OF OUR PHOTOS?
Did you know that photos that are published in our paper are available to purchase?
Call in and see us today.
Ph/Fax: 06 761 7016 - 23 Napier Street, Opunake or e-mail us: ads@opunakecoastalnews.co.nz
Prices from:
Postcard size \$7 - Medium size \$10 - A4 size \$18



FAIRVIEW WINDOWS & DOORS HAWERA

Retro fit your existing aluminium windows with factory made double glazed units by the professionals.
Call now for your free quote
Don't get had by the stick on double glazing products, it doesn't work!



WAYNE JONES
(06) 278 8991
e: jones.fairview@xtra.co.nz
w: www.fairviewhawera.co.nz
159 Princes Street, Hawera

FAIRVIEW WINDOWS & DOORS HAWERA

Hawera Target shooting results

Competition kicked off to a strong start at the Hub weekly shoot on March 20.

The best group of the night went to first time shooter Christian Guero with a 100 group followed up with 90.0 on the full card.

Of the graded shooters Sam

Gooding looked very sharp with a 100.5 and 99.5 double card.

Christina Burr was right on target with a 98.3. Scores were: T. Uncles 88gr, 88gr, L. McMillan 83.0, 87.0, E. Swainson 79.0 80.0, E. Cornish 96gr,96gr, E. Fern 91gr, 75.0, C. Guero 100gr, 90.0, J. Leask97gr,

89.2, J. Park 74gr, 77gr, H. Andreoli 95.3, 97.3, C. Burr 91.0, 95.3, 92.4, 98.3, T. Conchie Crump 93.1, 94.3, J. Cameron 96.4, 97.5, F. Eustace 99.5 198.8, S. Gooding 100.5, 99.5.

Frank Eustace



WINTER IS COMING!

It's time to get your woodfire serviced

CALL US NOW TO

- Clean the flue
- Inspect the firebox and flue
- Service the door

We can service and repair most makes of woodfire

Houghton's Plumbing, Heating & Gas Ltd
164 PRINCES STREET, HAWERA 06 278 8883 • www.houghtonsplumbing.co.nz

✓ Plumbing ✓ Gasfitting ✓ Draining ✓ Bathrooms ✓ Heating ✓ Parts & Service

Master Plumbers

Be careful while out shooting

Positively identify your target, or it could be your mate that you shoot!

That is the message of Joe Green, Chairman of the Firearms Safety Council Aotearoa New Zealand, as the roar approaches.

On average one deer hunter is killed each year while deer hunting; failure to identify the target being a primary factor says Mr Green.

Identifying your target beyond all doubt is one of the seven basic rules of safe firearms handling and should be second nature to all hunters. Hunters should sight the head, neck and shoulder of the animal all at the same time, or at least sufficient of the animal to confirm target identification.

“No shooter should ever fire at shape, colour,

movement or sound.”

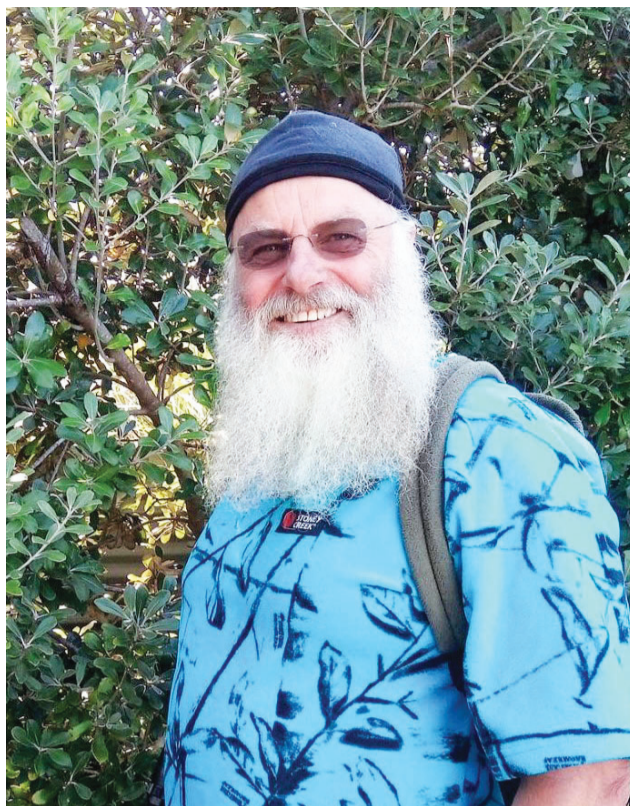
Beware under certain circumstances the brain can trick the eyes. Assume any shape, colour, movement or sound is a human until you can prove otherwise says Mr Green.

Wearing coloured clothing that contrasts with the environment, including deer, can help you be seen by other hunters. Ultimately, though the responsibility of target identification lies solely in the hands of the shooter.

In most of the incidents causing death and injury the shooter and the victim were in the same hunting party.

They deliberately separated, which began a series of factors leading to tragedy.

You and your hunting companions should stay together says Mr Green. If



Joe Green, Chairman of the Firearms Safety Council.

you do separate, then stop hunting until you regain visual contact.

Take special care during the roar, comply with all the seven basic rules of firearms safety, make sure you positively identify your target beyond, all doubt and if you are hunting with a companion stay together.

Treat every firearm as loaded. Check every firearm yourself. Pass or accept only an open or unloaded firearm.

Always point firearms in a safe direction, and loaded or unloaded, always point the muzzle in a safe direction.

Load a firearm only when ready to fire. Load only the magazine after you reach your shooting area, and load the chamber only when ready to shoot. Completely unload before leaving the

shooting area.

Identify your target beyond all doubt. Movement, colour, sound and shape can all deceive you. Assume colour, shape, sound, and shape to be human until proven otherwise

Check your firing zone. Think. What may happen if you miss your target? What might you hit between you and the target or beyond? Do not fire if you know others are in your firing zone.

Store firearms and ammunition safely. When not in use, lock away the bolt, firearm and ammunition separately. Never leave firearms in a vehicle that is unattended.

Avoid alcohol and drugs when handling firearms. Good judgement is the key to safe use of firearms.



Manaiia golf results

At left The South Taranaki Primary School Boys and Girls Championship was held at Manaiia recently. Ashton Sharpe of Auroa School won the 18 hole section. Ashton plays at the Manaiia Golf Club. Congratulations Ashton.

Monday Ambrose. March 12. 1. The Workers. 2. Poole Clan. 3. Triple Bogey. 4. Nigel & Friends.

Saturday. March 17. Men's Stableford. 1. Grant Hastie. 2. Greg Elliott. 3. Paul Hunn. 4 equal Caleb Symes and Rod Le Fleming. Twos. 1. Grant Gopperth. 2. Paul Hunn.

Junior. Senior. 1. Ashton Sharp. Kieran Taylor.

Lucas Symes. Junior. Oliver Sharp. 2. Jayda Sharp. 3. Zoe Reader.

Monday night Ambrose. March 19. 1. Tui & Red. 2. Auroa Hackers. 3. Triple Bogey.

South Taranaki Primary School Tournament 18 holes. Ashton Sharp. Nett 63. James Smithson 64. 9 Full Holes Girls. 1. Jayda

Sharp. 3. Zoe Reader. 9 Full Holes Boys. 1. Divan Denton. 2. Kieran Taylor. 3. Lucas Symes. 9 Short Holes. 6. Oliver Symes. 6 Short Holes. 1. Maxwell Stretchman. 2. Chantel Wong. 3. Nate Budd. 4. Connor Thomas. 5. Daniel Jones.

Men's Saturday results. March 24. 1. Gary Dowdle. 2. Joel Wolfe. 3. Greg Elliott. Twos. Greg Elliott.

GIVE US A CALL TO DISCUSS YOUR AUTUMN REGRASSING AND PASTURE REPAIR NEEDS

- Mowing
- Swathing
- Tractor and trailer carting
- Power harrowing
- Maize/grass drilling
- Round baling

- Ploughing
- Deep ripping
- Hedge mulching
- GPS and Autosteer equipped tractors

“like” us on **facebook**

JFM

CONTRACTING

Jared McBride
jfmcontracting.co.nz

Ph: 06 752 4558 or 027 477 5701
facebook.com/jfmcontracting

FREE QUOTE on your new Rotary Cowshed, phone or visit today!

See us for ALL your farm building requirements: Cowsheds, maize and silage bunkers, feed lot pads, silage pits, concrete work, plus commercial joinery and houses.

Manufacturers of OCTA-LOCK anywhere in New Zealand
Maize Pits, Feedpits BOOK NOW
Ready for Next Season

Fabish & Jackson (2010) Ltd
 3 Kelly Street, Inglewood 4330
 P: 06 756 8099
 F: (06) 7568099
 C: 0274 470 708
www.fabishjackson.co.nz

FOR SALE

FOR SALE

Ford Telstar 1994 - \$2500
Suzuki Calvacade
Motorcycle - \$5000
Aquarian tank - \$200
West Coast truck mirrors - \$200
Phone 06 756 5811



RAHOTU PANEL & PAINT for insurance claims. Ph 027 487 7746

SUPPLEMENT
Straw, Silage, Hay.
Kalin Contracting. Ph. 0273844822.

McNEIL DECORATING - for all your painting and decorating. Ph: Jason McNeil 027 233 4584

LAWNMOWING and section maintenance by local contractor SOS. Free quote. Ph 027 605 8437

COASTAL GIB STOPPERS. Phone Glenn 027 524 5745

HEARTLAND CONSTRUCTION for all kitchens. Ph 027 236 7129.

HEARTLAND CONSTRUCTION for alterations. Ph 027 236 7129.

QUALITY PAINTER AND PAPERHANGER - Ph: Bryan McNeil 027 465 8631

CARPETS second hand, large selection After Disaster Ltd 223 Devon St West, NP. Phone (06) 769 9265

KNIFE SHARPENING. \$5 per knife at Collins Sports Centre. Ph 06 761 8778

TRADES & SERVICES

P.D. FLEMING LOGGING LTD
Forestry rigged & certified 33 ton loader, National Certificates in Forest Operations, Health & Safety approved. Free assessment on what your trees are worth \$\$\$
Ph: Paul
027 630 9922 or email: paulflems@gmail.com

MJP PAINTING & HANDYMAN SERVICES

For all your home maintenance needs.
No job too big or too small.
Qualified Tradesman 20 years.
Phone Mike 027 9425 251
Email: mikeparnell07@gmail.com

ACUPUNCTURE SPECIALIST

Member of Acupuncture NZ, BHSc Acu. Dip CH herbs., Massage Tuina, ACC Provider
NEW CLINIC - starting 9th Feb
No. 4 Butlers Lane, Oakura
Acupuncture - Massage - Herbal Medicines
Contact Nigel Cliffe - South Taranaki Acupuncture
06 763 8801 | 027 681 9524 
Hawera - Opunake - Oakura

WANTED TO BUY

SCRAP METAL - for all scrap metal Taranaki wide, give us a call. Molten Metals (06) 751 5367.

www.moltenmetals.co.nz



Getting Married?

We would love to share your special day with our readers. Send in a photo and details of how you met to editorial@opunakecoastalnews.co.nz



LOST

MISSING!

Answers to Franklyn or Frankie.



Our beautiful boy Franklyn (who also answers to Frankie) is missing and we need help finding him. He was last seen on Ahu Ahu Road on Thursday 25th January. He is a long haired, neutered, ginger boy and may have gotten scared off when there was a cat fight on the road. Please check your sheds or sections if you live in the area.

If you have seen him or have any information please call:
Audrey on (06) 752 1005 or 021 128 8223
OR Chinta on 021 255 1542

PUBLIC NOTICES



OPUNAKE BUSINESS ASSOCIATION

The Opunake Districts and Business Association invites all Businesses and the Community to:

STEVENS ROOM
SANDFORDS EVENT CENTRE
TUESDAY 17 APRIL AT 5.30 PM

STDC will present:
The Draft Long Term Plan for South Taranaki.

Come look and listen to the implications for Coastal Taranaki.

Questions and feedback will be welcome. The way to make submissions will be explained. Tea and coffee will be available, free of charge,

The public plan will be available from the 4/04/2018 and submissions will close on the 26/04/2018.

CHURCH NOTICES

Opunake & Okato Co-operating Parish CHURCH SERVICES

St Paul's Opunake Co-op & Rahoitu Opunake Cooperating Parish St Pauls, Havelock St 9.30am every Sunday and the Rahoitu - Wesley - 11am first Sunday of the month
Oakura - St James - 10am, 2nd & 4th Sundays
Okato - St Pauls - 10am, 1st & 3rd Sundays

Opunake Catholic Church

Sunday 8.30am at Pungarehu (St Martins), 10am at Opunake (Our Lady Star of the Sea) Other areas
Manaia - Sacred Heart - 1st, 3rd Sat at 5pm (2nd, 4th & 5th Sat at Hawera's St Josephs)
Kaponga - St Patricks, Sunday 8.45am All welcome

The Wave

Pentecostal Church 64 Domett St, Opunake
Sunday Services 10.30am
Women's Group 10.30am Tuesday
Men's Group 7pm Wednesday
Youth Group 7pm Friday
Come along or contact Pastor Murray 027 688 7378

St. Barnabas Anglican Church

141 Tasman St, Opunake
Sunday Services 10am
Communion 2nd, 3rd & 4th Sunday
Prayer & Praise 1st Sunday
Every 5th Sunday all 4 churches gather for a Combined Service

Okato Community Church

Meets 6.30pm Sunday at Hempton Hall. Everyone welcome

SITUATIONS VACANT



OPUNAKE MEDICAL CENTRE Practice Nurse Vacancy

We are looking for a part time Practice Nurse to join our friendly team.

We are a clinic who prides ourselves on delivering individualised care to the highest standard.

We require a nurse who can work independently and within a team environment.

Do you have what we are looking for?

- A current NZ practising certificate
- Excellent communication and interpersonal skills
- Are a team player with a positive attitude
- Hold current immunisation and smear taker certificates
- Experience in minor surgery

Working, 24 - 32 hrs per week, with flexibility to cover annual and sick leave. Training will be given to the successful applicant.

Please email CV to: practicemanager@oakuramc.co.nz



Opunake Primary School Board of Trustees

Casual Vacancy for an elected trustee

A casual vacancy has occurred on the board of trustees for an elected parent representative.

The board has resolved under section 105 of the Education Act 1989 to fill the vacancy by selection.

If ten percent or more of eligible voters on the school roll ask the board, within 28 days of this notice being published, to hold a by-election to fill the vacancy, then a by-election will be held.

Any eligible voter who wishes to ask the board to hold a by-election should write to:

Chairperson
Board of Trustees
Opunake Primary School
PO Box 49
Opunake 2645
by: 19th April 2018.

PUBLIC NOTICES

BUDGET ADVICE every second Wednesday at Coastal Care. 9.30 - 12.30. Phone 0800 333 048

SOCIAL BRIDGE players sought Opunake area. To advertise with us phone 06 761 7016
Phone 021 184 8308

Advertisers who put in public notices and display adverts in the What's On Section for events are welcome to additionally provide extra editorial and photos FREE OF CHARGE, to help promote the event.




OPUNAKE CHURCHES

Good Friday Walk of Witness March 30

Starting at Cenotaph at 9am then visiting all the churches.

Finishing with a service at our Lady Star of the Sea Catholic Church at 10am.

All welcome



OPUNAKE BUSINESS ASSOCIATION

Next month's meeting TUESDAY APRIL 17 AT 5.30PM

- Security Cameras
- Buy local
- Freedom Campers
- Anything else on your mind

Hughson & Associates Boardroom at the Opunake Business Centre, 23 Napier St, Opunake

What's On Listings



JONATHAN YOUNG

Need to chat with your Local MP Jonathan Young? Jonathan will now hold his meetings at Coastal Care. Refer advert for details. For more information phone: 06 7591363

Or email newplymouthmp@parliament.govt.nz

OPUNAKE BUSINESS ASSOCIATION

Usually meet on the 1st Monday of each month. April meeting to be held on Tuesday the 17th April. Refer advert.

OPUNAKE COUNTRY MUSIC CLUB

Second Sunday of each month at the Opunake Town Hall, 1-4pm. All welcome

SCHNITZEL NIGHT

Every Wednesday at the Stony River Hotel, Okato

COASTALCARE – LISA KEEN AUDIOLOGY

Wednesdays 9am - 5pm, for an appointment call 027 591 4222 - 0800 555 676

TAI CHI BASICS

Thursdays 9am – 10am at Coastal Care Community Room

NIGEL CLIFFE ACUPUNCTURE

Thursdays 11am-4pm at Coastalcare, Opunake.

CLUB HOTEL TEXAS HOLDEM POKER

Wednesday and Thursday Nights at the Club Hotel.

CLUB HOTEL POOL

Tuesday Nights. New players welcome.

OPUNAKE SURF INN

Every day free pool. Every Sunday afternoon. Pool comp

COASTAL YOUNG FARMERS

Meet 2nd Thursday of every month at 7pm at the Okato Bowling Club.

TARANAKI COUNTRY MUSIC HALL OF FAME, MANAIA

Running every Thursday night from 7.30pm, 11 Surf Highway, South Road, Manaia.

EGMONT EUCHRE CLUB

Meets every Thursday 1pm at the Opunake Bowling Club

CAPE EGMONT HISTORIC LIGHT & MUSEUM

Open 11am – 3pm weekends, Bayly Road, Warea.

ELTHAM BUSINESS ASSOCIATION FRIDAY MARKETS

8am to 1pm, Carpark of Touch Point, High Street, Eltham.

PREGNANCY HELP TARANAKI

Is now in OPUNAKE! Are you pregnant? Do you have a baby or young family? To hear more, like us on facebook www.facebook.com/preghelptaranaki/. Please come and meet us and find out how we may be able to help you.

OPUNAKE FRIENDSHIP CLUB

Meeting last Monday of each month in Opunake Town Hall at 1.30pm. All welcome.

TAINUI DAY CENTRE - 141 Tasman Street Opunake.

Each Monday at 10:00 12:30. \$2 donation. Recreational & Social Friendship. To those of more mature years. Come yourself or bring a friend. A warm welcome, have no fear. Happiness & laughter we intend.

More information call Jenny 06 7618080 or Glenys 06 655802

MOVIES AT EVERYBODY'S THEATRE IN OPUNAKE

Playing several days and nights each week. Refer timetable and ad for details..

J.D. REID GALLERY SHOWCASE 2018 ART EXHIBITION

Open March 3-April 7 (except Good Friday). Monday-Friday 10am-5pm. Saturday 10am-3pm. Sunday 10am-2pm. At 33A Devon St, New Plymouth.

'RECLAIM' MIXED MEDIA EXHIBITION

At the Village Gallery, Eltham. March 12 to April 6. Refer advert for details.

OPUNAKE CHURCES GOOD FRIDAY WALK OF WITNESS

March 30. Assemble at the cenotaph at 9am. Refer advert for details.

THE CHRISTMAS VILLAGE

Open Easter Sunday. Egmont Rd, New Plymouth. See advert.

TARANAKI HARVEST FEAST

Stony River Hotel, April 1. Refer advert for details.

JOSHUA vs PARKER, LIVE ON THE BIG SCREEN

At the Good Home, New Plymouth. April 1. Refer advert for details.

2018 TARANAKI ROSE OF TRALEE SELECTION

EnterNow OnlBotique ine www.roseoftralee.ie/apply
Easter Mon 2nd April - Interviews and Race Day, Hawera
Sat 7th April - Rose final - Dinner, dance, Live Band, Irish Dancing.
Tickets at Plymouth Hotel Reception.

www.facebook.com/taranakiirishclub

Contact Louise Buhler 06 274 8494

RENEE & WES

Sat 7 April playing in the front bar from 7.30pm, Butlers Reef Oakura

THE TIMELINERS

From Wellington, Saturday April 14 playing in the front bar from 7.30pm, Butlers Reef, Oakura

TARANAKI NATIONAL ART AWARDS AGM

Sandfords Event Centre, 11 April at 1pm. Refer advert for details.

TARANAKI HOME & LIFESTYLE EXPO

April 13 -15 at the TSB Stadium, New Plymouth. Fri-Sat 10am-5pm, Sun 10am-4pm. Refer advert last issue for details.

OPUNAKE BUSINESS ASSOCIATION / STDC LONG TERM PLAN PRESENTATION

17 April at 5.30pm at Sandfords Event Centre. refer advert for details.

MOTEL CALIFORNIA - EAGLES TRIBUTE SHOW AT BUTLERS REEF

April 21 from 8pm to 11pm. Butlers Reef, SH45, Oakura. Refer advert for details.

PIHAMA LAVENDAR MARKET DAY

Sunday April 22, Old Pihama Dairy Factory. Refer advert.

OPUNAKE RAHOTU VETERINARY TRUST

Financial assistance is available to students to undergo tertiary education relating preferably to agricultural or horticultural studies although consideration will be given to other applicants.

Application forms available from:-

The Secretary

P O Box 117

OPUNAKE 4616

PHONE 761-7150

EMAIL: nevisbrewer@gmail.com



Jump to it!

Get your copy at a newstand near you, today!

- Parera's Bookshop, Broadway, Stratford
- Outside First National, Cnr Victoria and High Streets, Hawera
- Challenge Spotswood Petrol Station, New Plymouth
- The Health Shop, Centre City, New Plymouth
- Westside Grille, Tukapa St, Westown
- The Store, Cnr Tukapa St & Wallath Rd, Westown (By the Locals Café)
- Nth Taranaki Community House, 67 McLean St, Waitara
- Inglewood Book Centre, 31 Rata St, Inglewood





Sailing by Jill White

A unique art gallery by the port

The White Sail Gallery, right next door to the iconic Chaddy's Charters down at the port is a unique seaside gallery offering the work of local and national artists.

Local Taranaki artist Jill White shows her own work as well as the work of potters, painters and installation artists

Jill exhibits around New Zealand so is able to source

new works by interesting and collectable artists.

Along with the art, the gallery also has a great range of jewellery, scarves, greenstone and paua.

There are lots of unique gift ideas for those who want to send a gift overseas, and it's

a great place to bring visitors

There is always a chance of seeing stingrays, little blue penguins and possibly even orca.

Chaddy's Charters, is just next door, so there's always a great day at Breakwater Bay.



Opening Easter Saturday ~ 31st March 2018

Prepare to be Amazed!

Our Stunning Village is Bigger & Better than Ever!

Full of New Season items and an Extensive Range of NEW X-Large Display Pieces. Come early to make the most of our Long Term Layby Option & Loyalty Cards.

OPEN Sat, Sun & Mon 10am ~ 4pm ALL YEAR!



Believe in the magic

06 755 1934 63 Egmont Road, NP
www.thechristmasvillage.co.nz The Christmas Village



YES

CHADDY'S CHARTERS ISLAND TOURS

Mountain Bike, Kayak and Paddle Board Hire

Fun to share with friends and family 8.30am to 4pm

Open Daily Ph: 06 758 9133

The WHITE SAIL Gallery

The Gallery is open from 10am to 4pm Tue to Sunday Closed on Monday.

Some extended hours over summer and festive season Private viewing can be arranged outside of these hours

027 306 3347 or 06 769 6669

35 Ocean View Parade - Breakwater Bay (Next to Chaddy's Charters) Motorua

WESTSIDE GRILLE

Open 10am till late 7 days

41 Tukapa St - Westtown - New Plymouth

Phone: 06 758 4430

Email: howdy@westsidegrille.com

Taranaki stories come to life at Tawhiti

It can be quite a mission convincing today's children that Taranaki has not always been cows, boxthorn hedges and skinny tar-sealed roads. To sell a story of ships, traders and muskets is like the stuff of fiction in their eyes. And yet it is exactly these stories that Tawhiti Museum has chosen to tell in a most remarkable and innovative historical presentation.

Traders and Whalers was two years in the planning and over two years in the building. This attraction sets out to challenge its guests with a stunningly creative and hauntingly real environment as the basis for a study of the Taranaki coast in the 1820 - 1840 period. Illuminated only by the twinkling of candles and lanterns, guests drift in a boat through this eerie world where distant birds call and water drips from mossy banks, as burly sailors barter with local Maori for pork, potatoes and flax in return for that most sought after item - the flintlock musket.



Traders and Whalers at Tawhiti

With Nigel Ogle's sculpting and modelling skills already well honed in the main museum displays - including one that consists of over 800 figurines - he now finds a new level of creativity in Traders and Whalers. The life size figures, beautifully crafted period artefacts and scale

models reach a new level in this totally convincing lush bush, rocky coastal and dark river environment. As museums worldwide seek new and original ways of delivering history to their audiences, Traders and

Whalers has stepped up to the mark, and in typical kiwi style, produced an absolutely world class attraction which punches well above its weight. The attention to detail in this, and all the other displays at Tawhiti

is simply incredible, and it is certainly clear that Ogle has a very special affection for his project. Whatever it is that drives his creativity,

the freedom of expression he enjoys or the vision - his enthusiasm and desire to keep making it still better is resulting in a truly unique

attraction for Taranaki. Tawhiti Museum is rated by Trip Advisor as one of the top three museums in New Zealand.

Cycle and Kayak with Chaddy



Dave Chadfield of Chaddys Charters with some new E bikes ready to hire for rides along the New Plymouth Coastal Walkway.

As well as running the fantastic Island Tours around the Sugarloaf Islands Chaddy hires out Kayaks and Paddle Boards.

There is also a little trailer available to tow small children behind a bike.

Tawhiti Museum's Dramatic Attraction

TRADERS & WHALERS

Where visitors are taken by boat through this dark, rocky coastal world of the 1820s, when Maori and European made first contact.

Cafe and 2 retail shops on site!

Open every Friday, Saturday, Sunday and Monday (including Easter)
10am - 4pm, 401 Ohangai Road, Hawera.
www.tawhitimuseum.co.nz



The Hillsborough Holden Museum and Bathurst-themed mini putt course

A fun outing for the whole family

The Hillsborough Holden Museum and Bathurst-themed mini putt course has recently opened its doors

to the public. This is a fun outing for the family and a great social opportunity conveniently only 10 minutes

from the centre of New Plymouth at 683 Egmont Road. To book call 0274 470 708.

The Holden Museum is a must see with 39 cars and loads of memorabilia. Entertain the whole family with a game of mini gulf, ride on the train and merry go round, challenge your brains to a game of outdoor giant chess or draughts, or just relax in the sun or shade and enjoy a coffee, ice cream or cold drink from the kiosk. Opening hours are 10 am to 4 pm weekends and public holidays

Originair



Fly Direct

Nelson to Palmerston North
Nelson to New Plymouth

Book now at
ORIGINAIR.NZ

0800 380 380



PIHAMA
Lavender
Growers and Makers
MARKET DAY
SUNDAY APRIL 22ND 10am - 2pm

HILLSBOROUGH
MOUNT PANORAMA
MINI-PUTT
18 HOLES



683 Egmont Rd, NP
Ph: 027 447 0708
Mini Putt open 10am to 6pm 7 Days
Weather permitting

Hillsborough
Museum



Hillsborough Holden Museum
Newly opened and unique to NZ. This immaculately displayed personal collection of Holden cars and memorabilia is now open to the public. The vehicles range from 1949 to the latest models. **This is a must see!**

683 Egmont Road, RD2,
New Plymouth
Mob: 027 4470 708
Opening Hours: 10am-4pm
Mon-Fri

Enjoy the holiday, not the break this Easter



is said to be therapeutic, but 783 people might disagree with that sentiment after injuring backs, shoulders, arms, fingers, or necks while pruning, planting, digging or weeding.

There were also 279 DIY injuries (involving hammers, saws, power tools, etc), with falls a common cause. Backs and spines bore the brunt with 63 injuries; 30 people hurt fingers or thumbs, while shoulders, hands, wrists, and eyes also sustained damage.

The best way to stay to safe while doing DIY is

to be realistic about your ability – if you can't do it, get an expert in.

Plan your day so you're not rushing to get finished in the evening when you're tired and more likely to slip up.

If you're going to use hire equipment, make sure you have the appropriate safety gear such as closed shoes, ear muffs, safety glasses and face masks.

Falling off ladders can lead to serious injuries. Last Easter there were 142 ladder-related claims; two-

thirds of them from falls. Make sure you use a safe, stable ladder; always keep three points of contact (both feet and one hand) with the ladder, and don't be tempted to over-reach sideways. It's much safer to get down, move your ladder, and then resume your work.

So whether you're sniffing out hidden chocolate or preparing to paint the house, think safety first so you enjoy the holiday, not the break, this Easter.

Stay safe this Easter break.

Slippery grass, holes in the ground, a rusty nail, and good old just not watching where you are going ... the classic Easter Egg hunt claimed a few victims last year.

The half-dozen people who needed medical attention as a result of hunting for chocolatey treats is negligible alongside the 19,951 New Zealanders who needed ACC help after hurting themselves over Easter 2017.

home is where the heart is, but in and around the house is also where most injuries happen, and last Easter was no exception with 11,077 people hurting themselves at home.

When it comes to indoor injuries, we can't confirm whether it was Colonel Mustard or Miss Scarlet who were hurt, but there was a good chance it was in the kitchen with a knife. Over a third of the 1176 injuries that occurred inside happened in

the kitchen, and 147 were cuts or puncture wounds.

Luckily there are some simple steps you can take to improve safety, such as clearing away clutter; cleaning up wet spills, and making sure there are no loose rugs for excited kids (and maybe some over-enthusiastic adults) to trip on, especially when hunting down hidden eggs.

Easter is often seen as a last chance to do home maintenance ahead of winter. A spot of gardening

What's On

Sat 7 April
RENEE & WES PLAYING IN THE FRONT BAR FROM 7.30PM

Sat 14 April
THE TIMELINERS FROM WELLINGTON PLAYING IN THE FRONT BAR FROM 7.30PM

1133 Main South Rd, Oakura
Phone 06 752 7765 - www.butlersreef.co.nz

CoastalCare

Haumaru ki Tai Health and Community Centre
Delivering essential community health and social services now and into the future....



DID YOU KNOW?

CoastalCare offers for hire, quiet, private, well-appointed rooms for meetings, training opportunities and social gatherings. This will seat up to 60 people or it has the flexibility to be divided into two smaller rooms. The facilities include a lounge area & kitchenette for self service of coffees and tea

Permanently residing in the building are:

- OPUNAKE PHARMACY,**
- OPUNAKE MEDICAL CENTRE,**
- ST. JOHNS AMBULANCE,**
- PLUNKET,**
- HEALTH BOARD SERVICES,**
- COASTAL PRINTERS**

CONTACT:
ARETHA LEMON or
ELAINE SPENCER,
Facility Managers on 06 761 8488

Some of the regular services we currently have running are:

COASTAL PRINTERS
Wednesday and Friday 9am - 5pm
TAYLOR DENTAL PRACTICE
Offering full dental services every Thursday from hygiene treatments to dentures

LISA KEEN - AUDIOLOGY

Every Wednesday

ACUPUNCTURE CLINIC

Every Thursday afternoon.

TAI CHI - NIGEL CLIFFE

Every Thursday, 9am-10am

BUDGET ADVICE

By appointment

TARANAKI PODIATRY

Every 3rd Wednesday

HAUMIRI MASSAGE

Every 4th Thursday

COUNSELLING

Various providers and specialties including, relationships, drugs, alcohol, quit smoking, change support, family violence and anger management

DAIRY NZ

once a month course

EVERYBODY'S THEATRE

Opunake - MOVIES - BOUTIQUE THEATRE - HIRE
For information email: everybodystheatre@gmail.com or check facebook- Everybody's Theatre
Check out our website at www.everybodystheatre.co.nz - Phone 027 3837926

MARCH/APRIL 2018

<p>Lollies, Popcorn, Ice-creams, Chocolate bars, Coffee & Tea For Sale No Eft-Pos</p>	<p>Adults \$10, Students 4-16yrs \$8, Under 4 free Senior Citizens \$8. ID required for all R movies</p>																								
<p>GAME NIGHT Comedy, Mystery 1hr 40mins TBA Max and Annie's weekly couples game night gets kicked up a notch when Max's charismatic brother, Brooks, arranges a murder mystery party, But neither this "game" nor Brooks are what they seem to be. Fri 30th Mar 7pm Sat 7 April 7pm</p>	<p>WINCHESTER Horror, Thriller, True Story 1hr 39mins M Sat 31st Mar 7pm Wed 4th Apr 1pm</p>																								
<p>FINDING YOUR FEET Comedy, Drama, Romance 1hr 51mins M: Offensive language, sexual references, drug use When Sandra Abbott discovers her husband of forty years is having an affair, she turns to her estranged, free spirited sister Bif. Bif takes a reluctant Sandra to dance class, where she gradually finds her feet...and love. Sun 1st Apr 7pm Fri 6th Apr 7pm Wed 11th Apr 1pm</p>	<p>MONSTER FAMILY Animation, Comedy, Kids & Family 1hr 36mins PG: Coarse language After Emma Wishbone takes her family to a costume party on Halloween, they are cursed by an evil witch and turned into a vampire, a mummy, a werewolf, and a monster. Emma must fight to find the secret to her family's curse. Mon 2nd Apr 1pm Sat 7th Apr 1pm</p>																								
<p>TOMB RAIDER Action & Adventure, Drama, Sci Fi, Fantasy 1hr 57mins M: Violence 21-year-old Lara Croft refuses to take control of her missing father's global empire as she does not believe he's gone. She leaves her life in London to search for her father's last known destination - a fabled tomb on a mythical island. Sun 8th Apr 7pm Wed 11th Apr 7pm</p>	<p>PACIFIC RIM UPRISING Action & Adventure, Drama, Science Fiction & Fantasy 1hr 51mins M The sequel to Pacific Rim. In this movie, once-promising Jaegar pilot Jake is recruited by his estranged sister to combat an unstoppable enemy that threatens to bring the world to its knees. Fri 13th Apr 7pm Sun 15th Apr 7pm</p>																								
<p>SHERLOCK GNOMES Action & Adventure, Animation, Comedy, Kids & Family 1hr 26mins PG After arriving in London, Gnomeo and Juliet are preparing their new garden for spring. When they come home to find their garden gnomes missing, they call in famous detective Sherlock Gnomes, and his sidekick Watson. Sat 14th Apr 1pm Wed 18th Apr 1pm</p>	<p>THROWBACK THURSDAY THE LORD OF THE RINGS: THE TWO TOWERS Action & Adventure, Classics, Drama, Science Fiction & Fantasy 3hrs M: Medium level violence Thu 5th Apr 7pm</p> <p>THE LORD OF THE RINGS: RETURN OF THE KING Action & Adventure, Classics, Science Fiction & Fantasy 3hrs 20mins M: Violence, fantasy horror Thu 12th Apr 7pm</p>																								
<table border="1" style="width: 100%; border-collapse: collapse;"> <tr> <td style="width: 16.6%;">Mon</td> <td style="width: 16.6%;">Wed</td> <td style="width: 16.6%;">Thur</td> <td style="width: 16.6%;">Fri</td> <td style="width: 16.6%;">Sat</td> <td style="width: 16.6%;">Sun</td> </tr> <tr> <td></td> <td></td> <td></td> <td>30 Game Night - 7pm</td> <td>31 Tad - 1pm Winchester - 7pm</td> <td>1 *Boutique* Finding Your Feet - 7pm</td> </tr> <tr> <td>2 Easter Monster Family - 1pm Black Panther-7pm</td> <td>4 The Music of Silence -1pm Winchester -7pm</td> <td>5 LOTR: Two Towers - 7pm</td> <td>6 Finding Your Feet - 7pm</td> <td>7 Monster Family - 1pm Game Night -7pm</td> <td>8 Tomb Raider - 7pm</td> </tr> <tr> <td></td> <td>11 Finding Your Feet - 1pm Tomb Raider - 7pm</td> <td>12 LOTR: Return of the King - 7pm</td> <td>13 Pacific Rim Uprising - 7pm</td> <td>14 Sherlock Gnomes - 1pm Ready Player 1- 7pm</td> <td>15 Pacific Rim Uprising - 7pm</td> </tr> </table>	Mon	Wed	Thur	Fri	Sat	Sun				30 Game Night - 7pm	31 Tad - 1pm Winchester - 7pm	1 *Boutique* Finding Your Feet - 7pm	2 Easter Monster Family - 1pm Black Panther-7pm	4 The Music of Silence -1pm Winchester -7pm	5 LOTR: Two Towers - 7pm	6 Finding Your Feet - 7pm	7 Monster Family - 1pm Game Night -7pm	8 Tomb Raider - 7pm		11 Finding Your Feet - 1pm Tomb Raider - 7pm	12 LOTR: Return of the King - 7pm	13 Pacific Rim Uprising - 7pm	14 Sherlock Gnomes - 1pm Ready Player 1- 7pm	15 Pacific Rim Uprising - 7pm	
Mon	Wed	Thur	Fri	Sat	Sun																				
			30 Game Night - 7pm	31 Tad - 1pm Winchester - 7pm	1 *Boutique* Finding Your Feet - 7pm																				
2 Easter Monster Family - 1pm Black Panther-7pm	4 The Music of Silence -1pm Winchester -7pm	5 LOTR: Two Towers - 7pm	6 Finding Your Feet - 7pm	7 Monster Family - 1pm Game Night -7pm	8 Tomb Raider - 7pm																				
	11 Finding Your Feet - 1pm Tomb Raider - 7pm	12 LOTR: Return of the King - 7pm	13 Pacific Rim Uprising - 7pm	14 Sherlock Gnomes - 1pm Ready Player 1- 7pm	15 Pacific Rim Uprising - 7pm																				

Good Home is good place to catch the fight

IBF, WBA, IBO & WBO WORLD HEAVYWEIGHT TITLES

JOSHUA vs PARKER

SUNDAY 1ST APRIL

Open from 7.00am
\$5 entry and receive a free coffee

SKY
ARENA

Come in to the Good Home and watch New Zealand's very own Joseph Parker take on Anthony Joshua on Sunday April 1. All the action will be live from 7.00am. It is only \$5 entry and you get a free coffee to kick start an early morning. There will be a buffet breakfast going all morning with all your favourites like bacon, eggs and hash browns for only \$25. (Get a free coffee with breakfast as well).

Crackers about Christmas?



Visiting New Plymouth? Call in to The Good Home

Steaks, pizzas, salads, fish and chips and more!
Delicious desserts!
Great range of cold beers and wines.
We have all your bases covered.
Open for brunch, lunch and dinner.

Proud supporters of the Coast!

21 Ariki Street | www.thegoodhomenp.co.nz | 06 7584740

Some people love Christmas so much they wish it was all year long. Pop in and see Jenny and the team at the Christmas Village when they re-open on Saturday March 31st. From then they will be open every Saturday, Sunday and Monday from 10am to 4pm. See advertisement page 24.

Taranaki
Harvest Feast

Stony River Boutique Hotel
April 1st - 3pm-late